



## Sample Report

3 Bedroom House

Monday, 29 December 2025

213 Snags Identified

Snag My New Home 



## Snag 1

Assigned To: Bedroom 1

Room thermostat not level



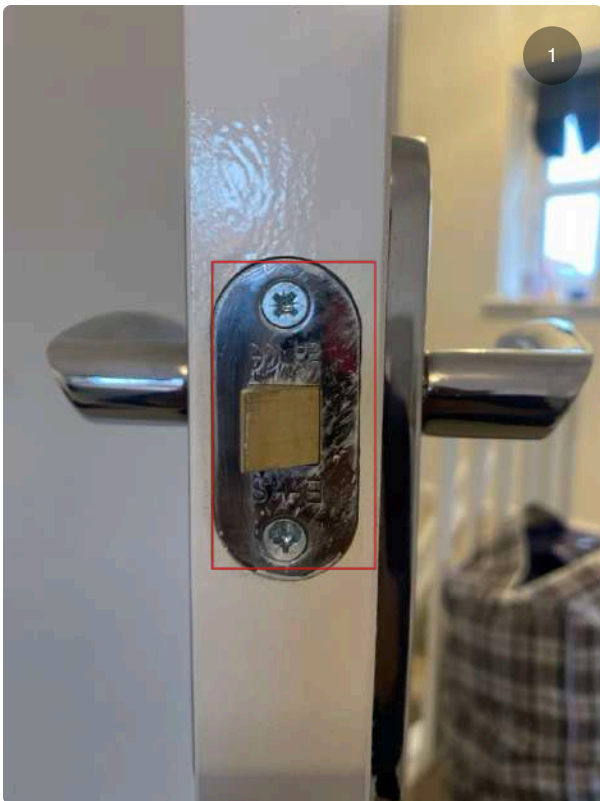
## Snag 2

Carpet lifting to bottom right of door frame



### Snag 3

Poor paint work to bottom right of door by leading edge

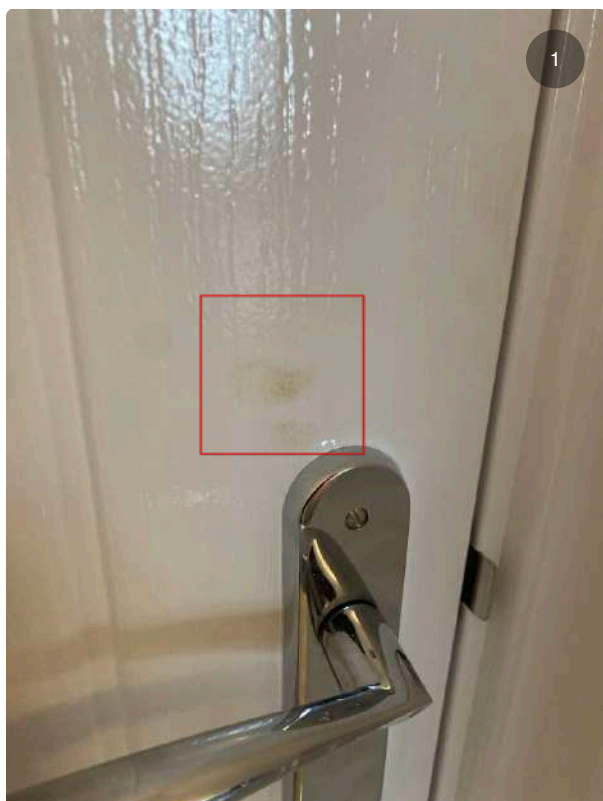
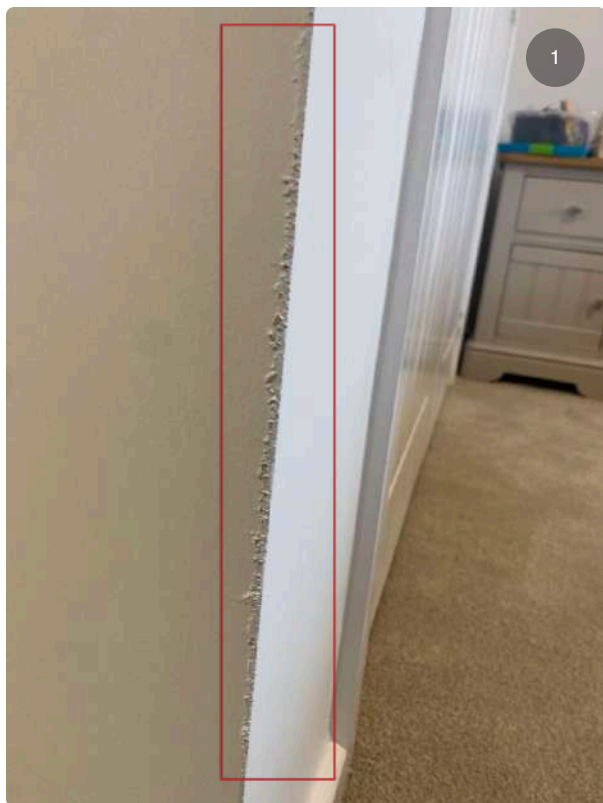


### Snag 4

Clean paint off latch

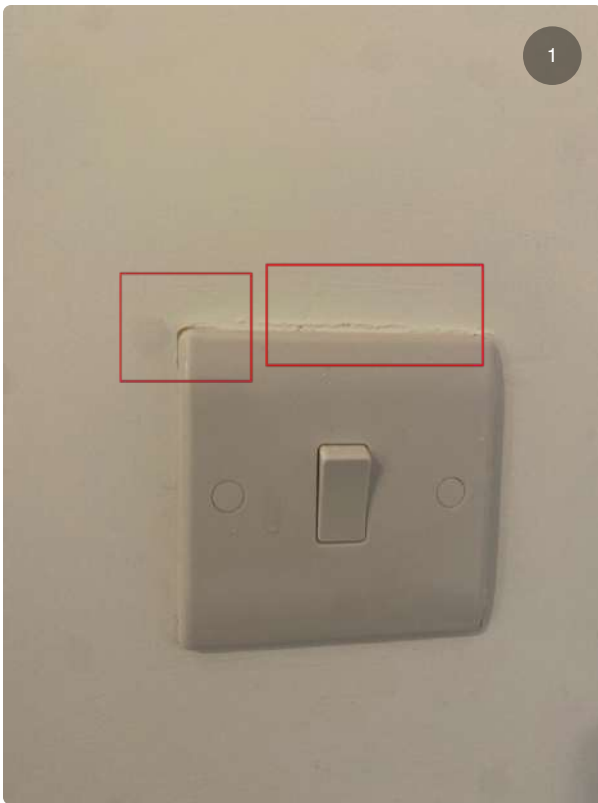
## Snag 5

Poor finish to wall bottom right of room thermostat



## Snag 6

Dirty marks above door handle



### Snag 7

Improve decorations around light switch



### Snag 8

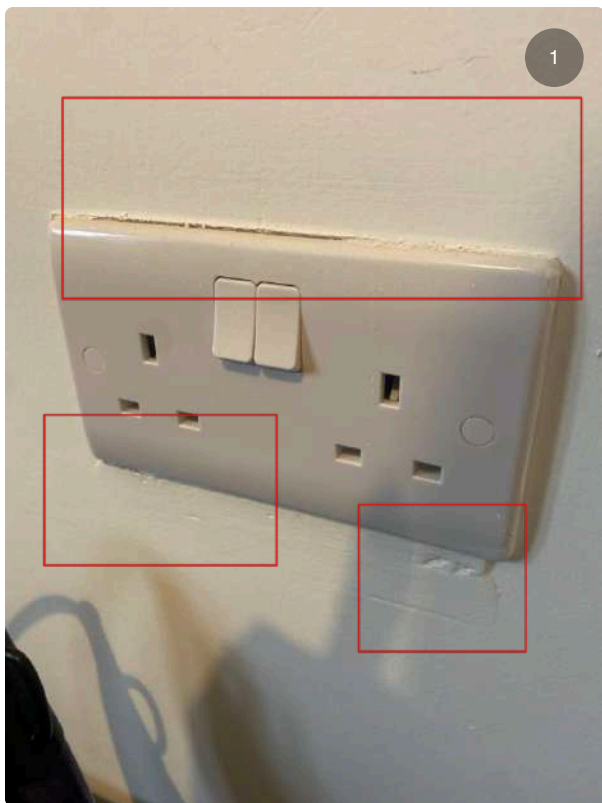
Indent to wall above door stop





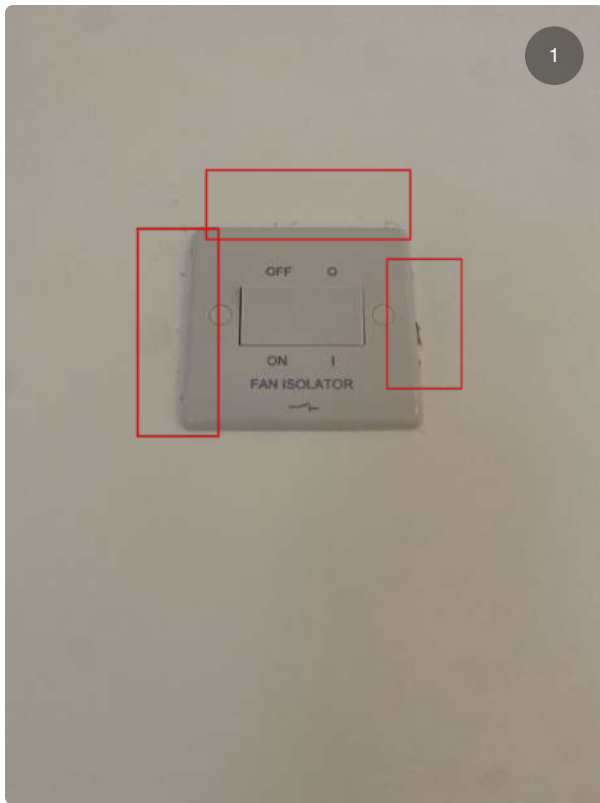
### Snag 9

Ensuite light not level



### Snag 10

Improve finish around double sockets left of right of en-suite door



## Snag 11

Improve finish around fan isolater switch



## Snag 12

Clean external glazing



### Snag 13

Pencil marks behind radiator



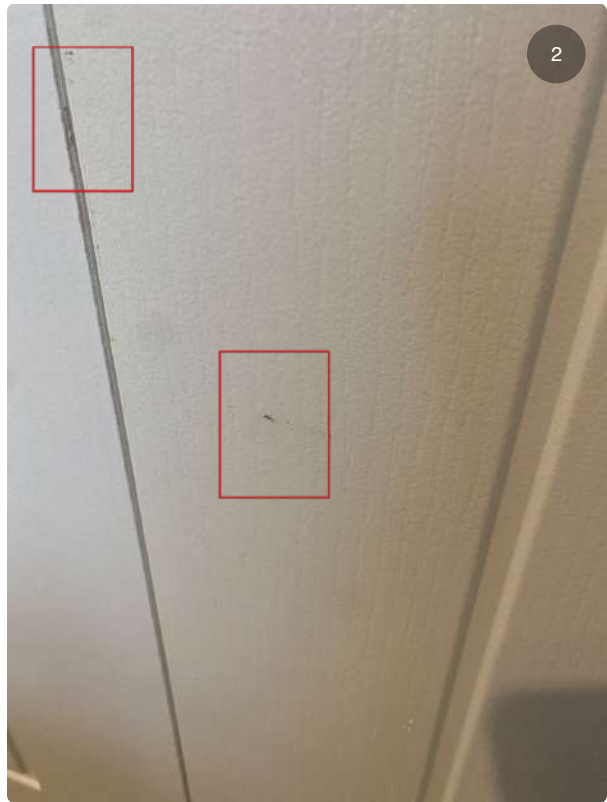
### Snag 14

Poor finish to door by bottom hinge

### Snag 15

Scuff marks to face of wardrobe doors







## Snag 16

Improve finish to top right door stop

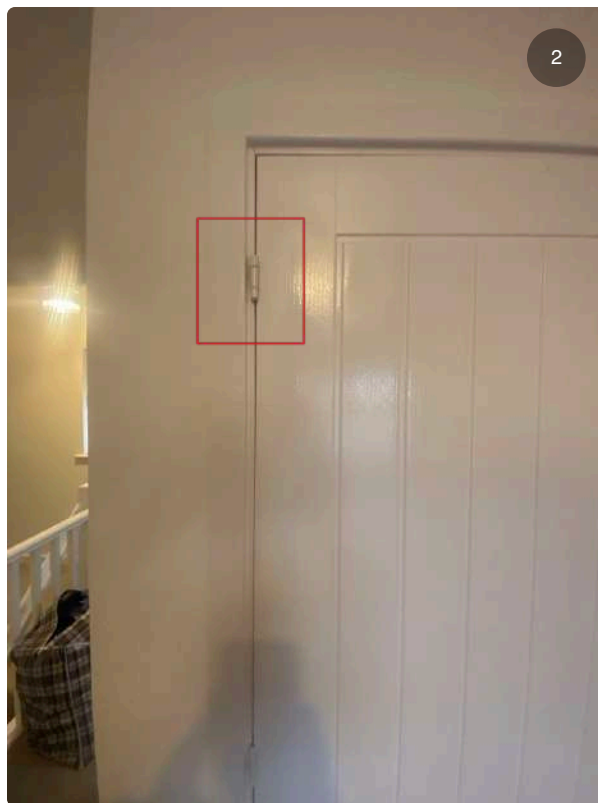
## Snag 17

Poor finish to left wardrobe door and lining



## Snag 18

Dry filler to top left door hinge



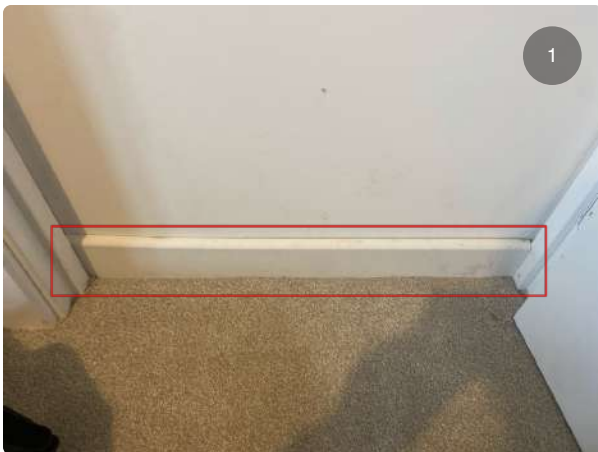
## Snag 19

Fill in holes behind room thermostat



## Snag 20

Chips to edge of wall



## Snag 21

Skirting board not painted



## Snag 22

Improve finish to top of wall



### Snag 23

Top plinth not painted properly poor finish to be improved

### Snag 24

Assigned To: Ensuite

Chips to leading edge of door







## Snag 25

Scuff mark to bottom of door



## Snag 26

Improve finish to underside of vent



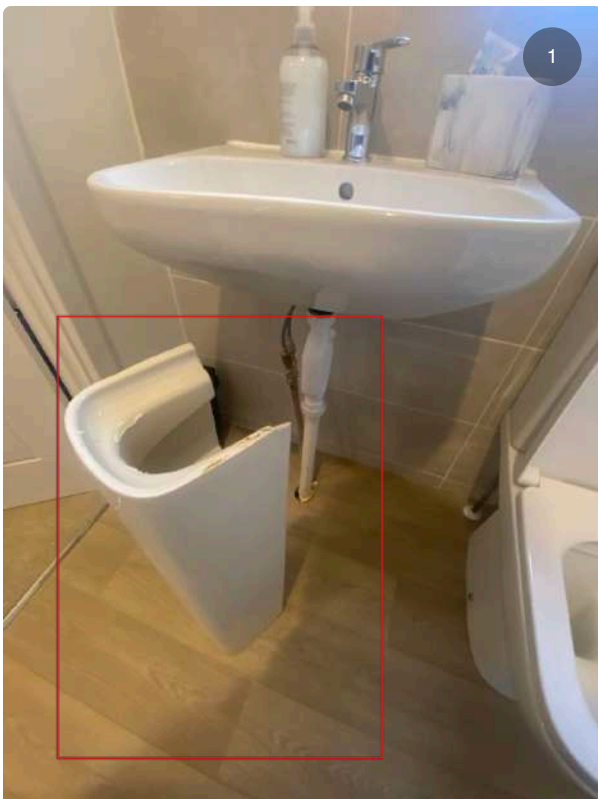
### **Snag 27**

Defective sink twisted



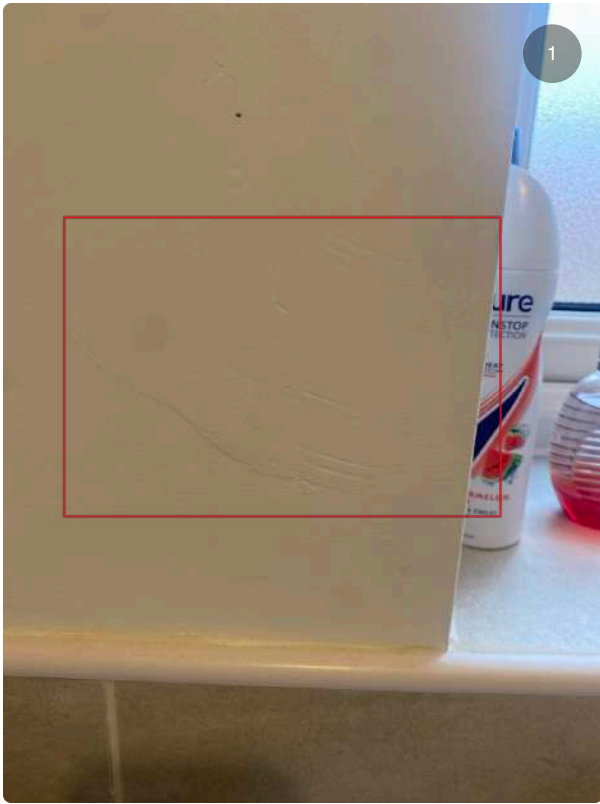
### **Snag 28**

Mastic missing around floor perimeter



### **Snag 29**

Sink pedestal not fitted correctly but is also chipped. To be replaced



### Snag 30

Poor finish to wall above sink tap

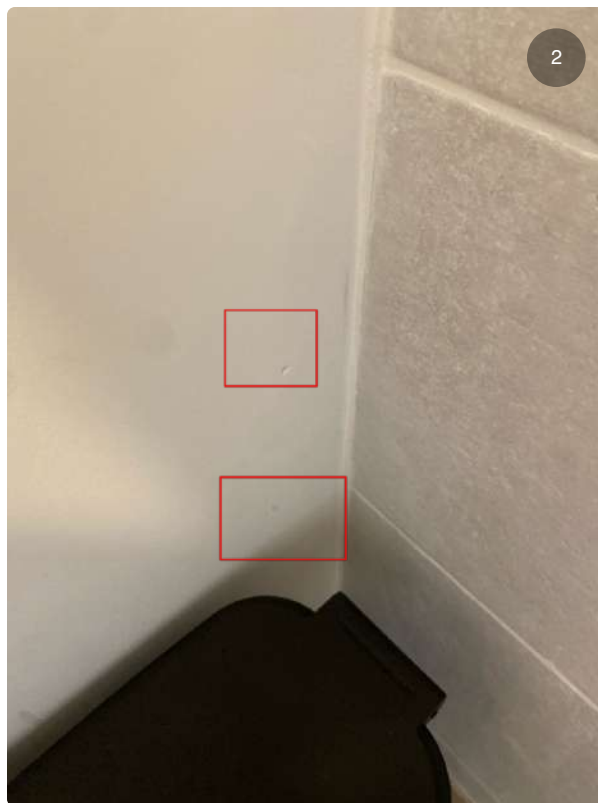
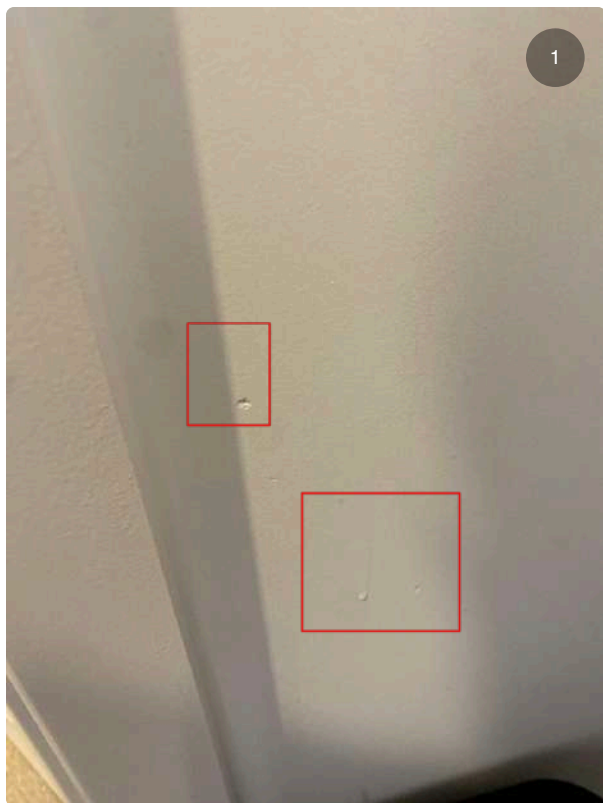


### Snag 31

Clean pipes and improve finish to bottom

## Snag 32

Improve finish to wall left side of sink



## Snag 33

Chip to right window reveal



### Snag 34

Poor finish to right reveal

### Snag 35

Yellow staining to top window reveal





## Snag 36

Yellow staining to left and right window reveal



## Snag 37

Black scuff marks to right window frame

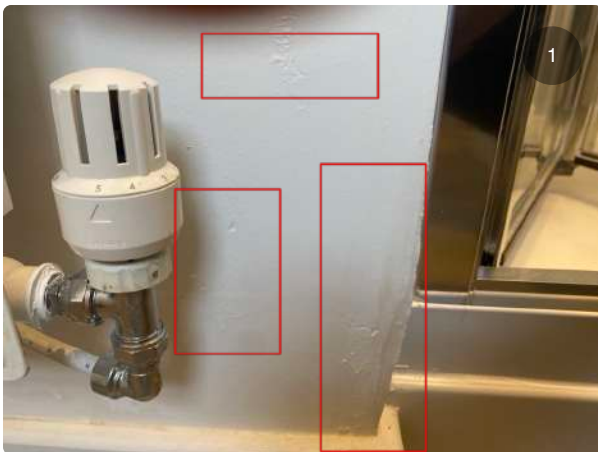


### Snag 38

Improve wall finish left of shower screen

### Snag 39

Poor finish to wall right side of radiator



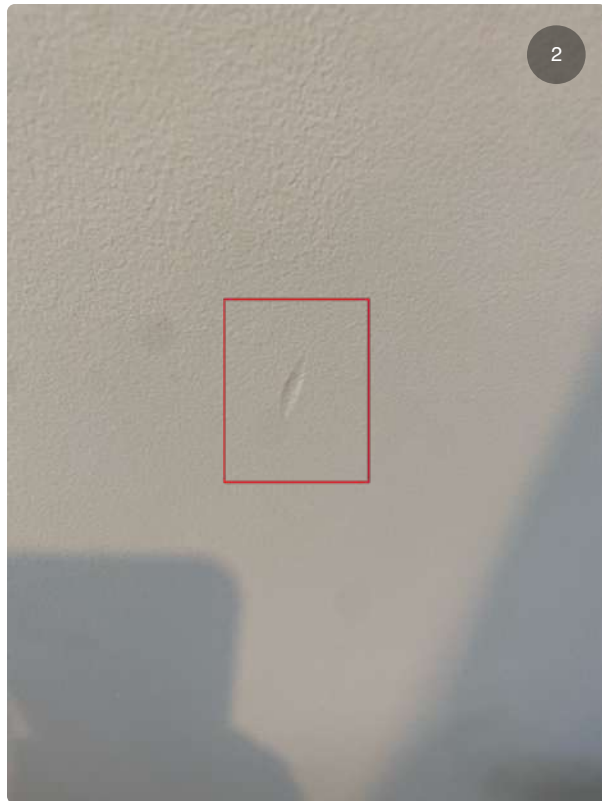
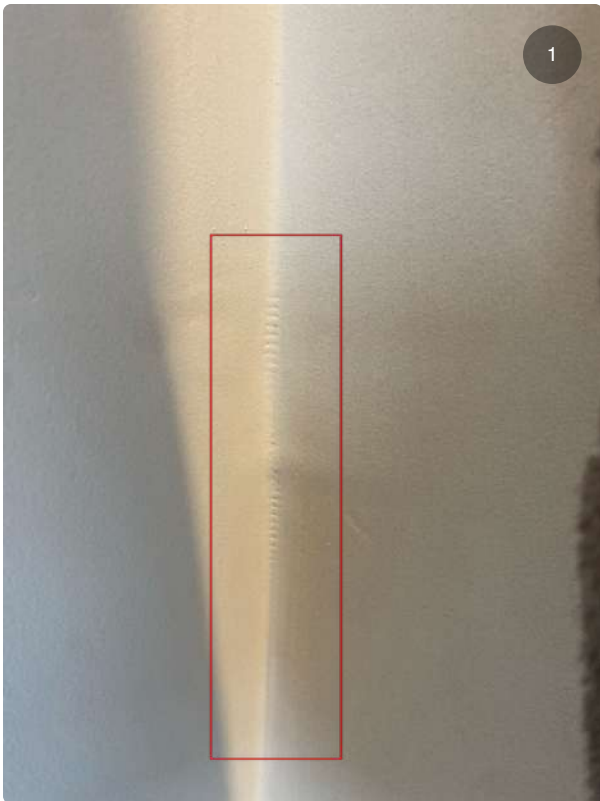


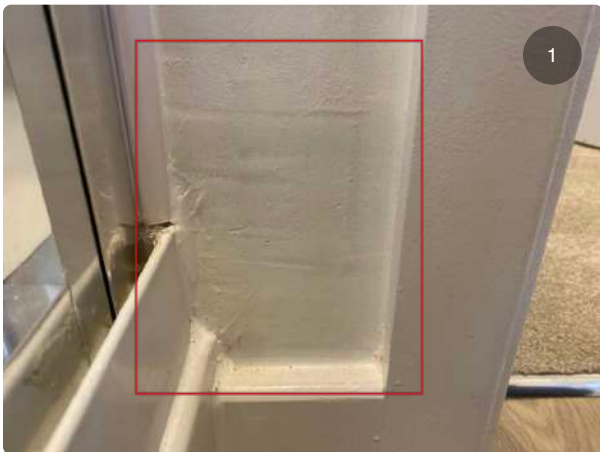
### Snag 40

Scuff marks to skirting board left of radiator

### Snag 41

Poor finish to wall left side of radiator





## Snag 42

Rough finish to wall left side of door architrave at bottom

## Snag 43

White stains on tiles



## Snag 44

Loose cover top





### **Snag 45**

Chip to face of door

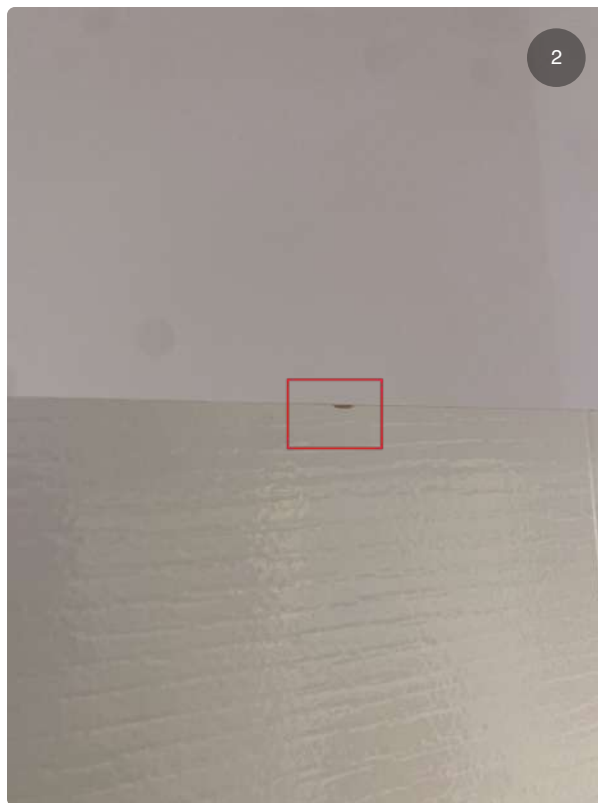


### **Snag 46**

Improve ceiling finish around light pendant

## Snag 47

Chip marks to top of door



## Snag 48

Clean excess paint off tiles left side of the wash hand basin sink



### Snag 49

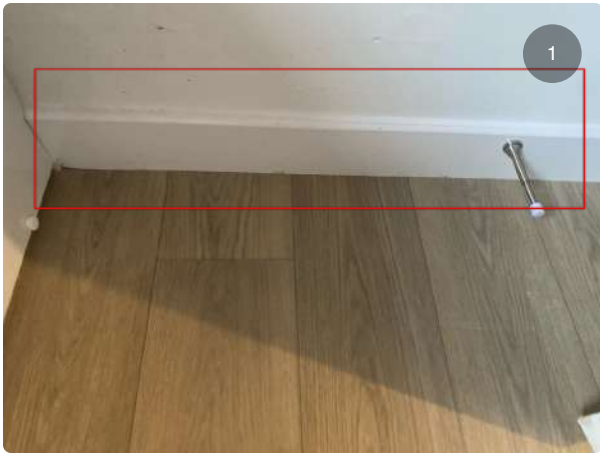
Movement in shower tray



### Snag 50

Assigned To: Bathroom

Flooring missing behind toilet



### **Snag 51**

Mastic flooring perimeter



### **Snag 52**

Damage to bottom left of sink pedestal



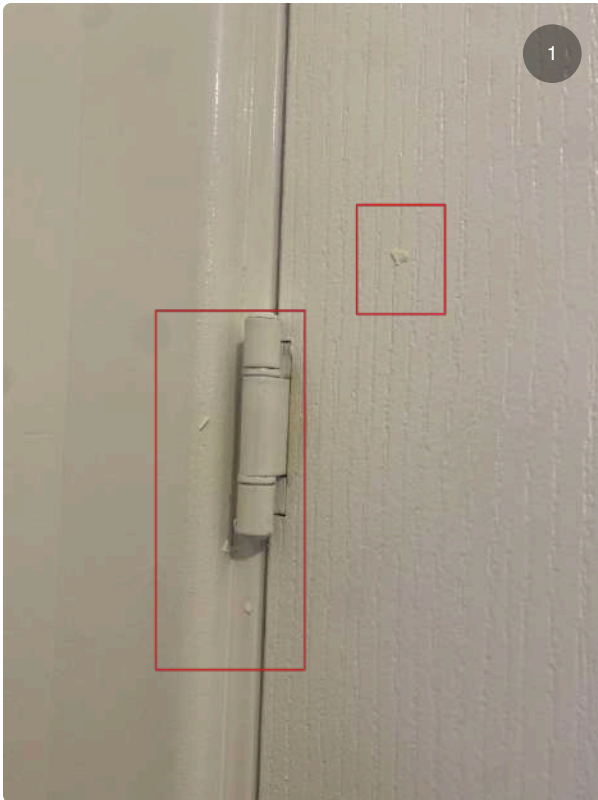
### **Snag 53**

Poor finish around extractor fan



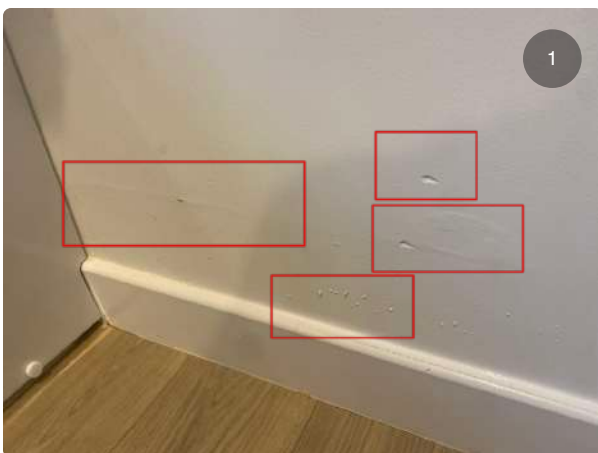
### **Snag 54**

Clean paint of tile



### **Snag 55**

Improve finish to left architrave



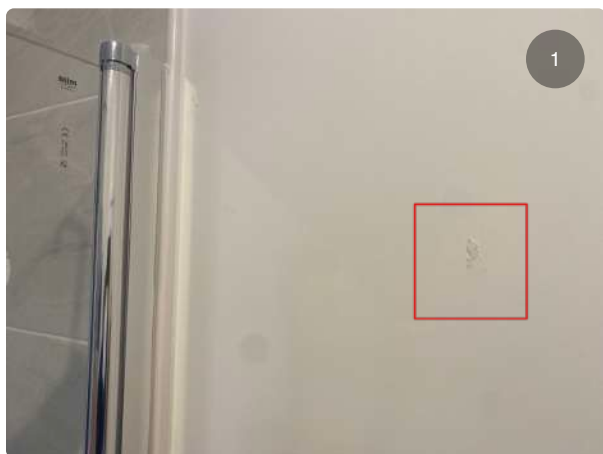
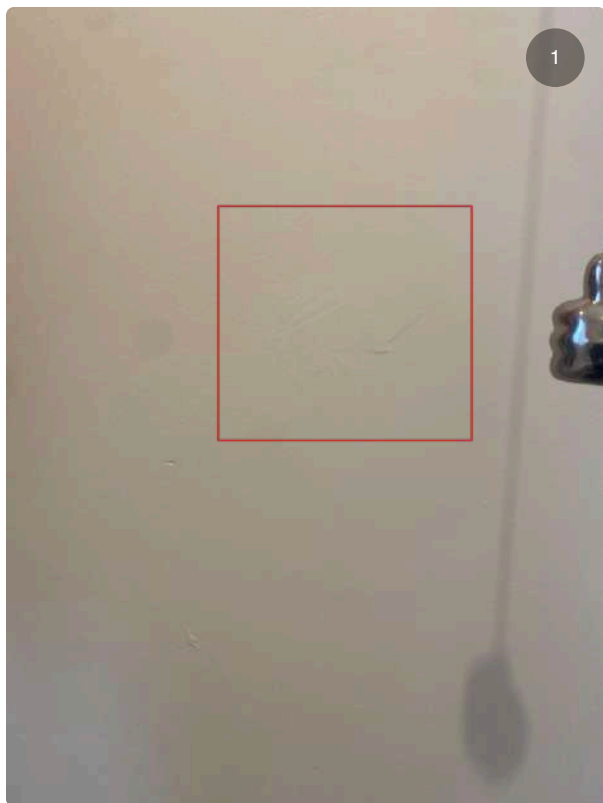
### **Snag 56**

Poor finish to wall left side of the radiator



## Snag 57

Poor finish to wall top left of radiator



## Snag 58

Scuff mark to wall side of bath screen



### Snag 59

Poor finish to ceiling above shower head



### Snag 60

Yellow staining to bottom right of the window frame



### **Snag 61**

Poor mastic finish underside of wash hand basin



### **Snag 62**

Poor mastic finish to back of bath



### **Snag 63**

Chips to wall



### **Snag 64**

Clean paint off tiles

## Snag 65

Clean tiles by shower head







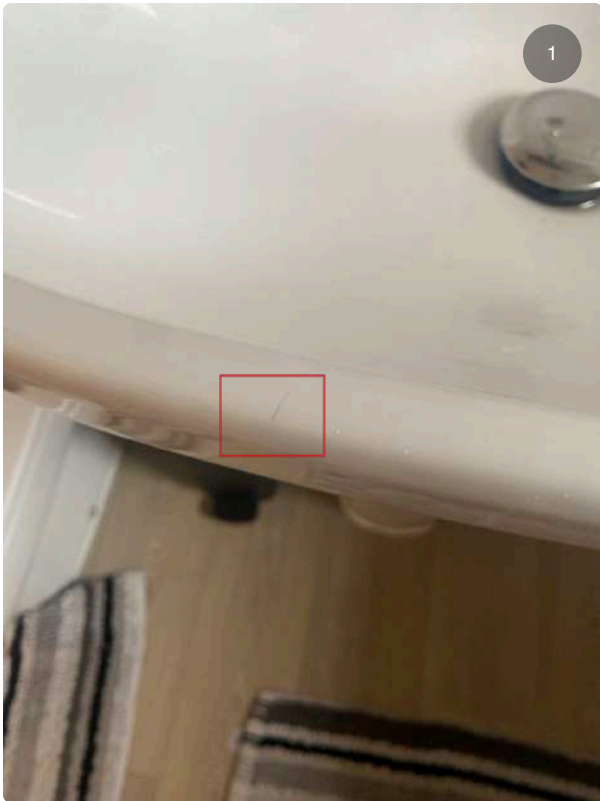
### Snag 66

Improve ceiling finish around light



### Snag 67

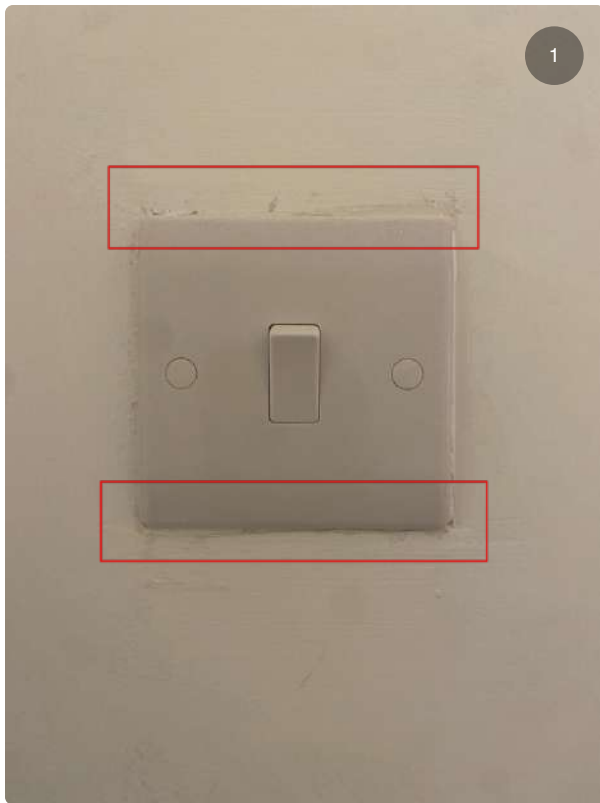
Improve finish to top right of door stop



**Snag 68**  
Scratch to sink



**Snag 69**  
Sink not level



### **Snag 70**

Assigned To: Bedroom 3

Improve decoration around light switch



### **Snag 71**

Poor finish to wall bottom of the light switch



## Snag 72

Poor finish to top right of door

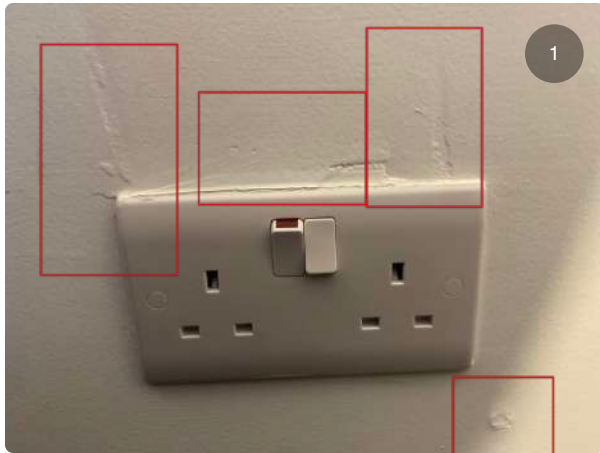


## Snag 73

Double socket not level

## Snag 74

Improve finish around the double socket





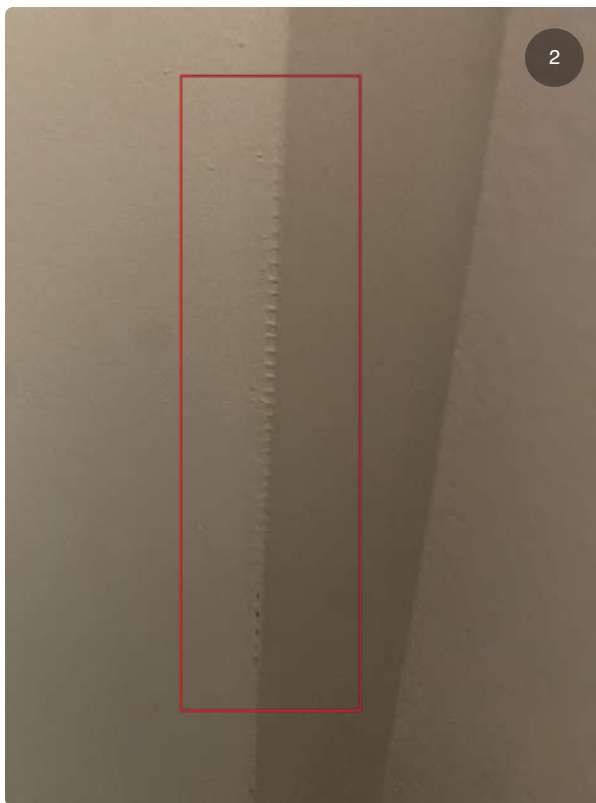
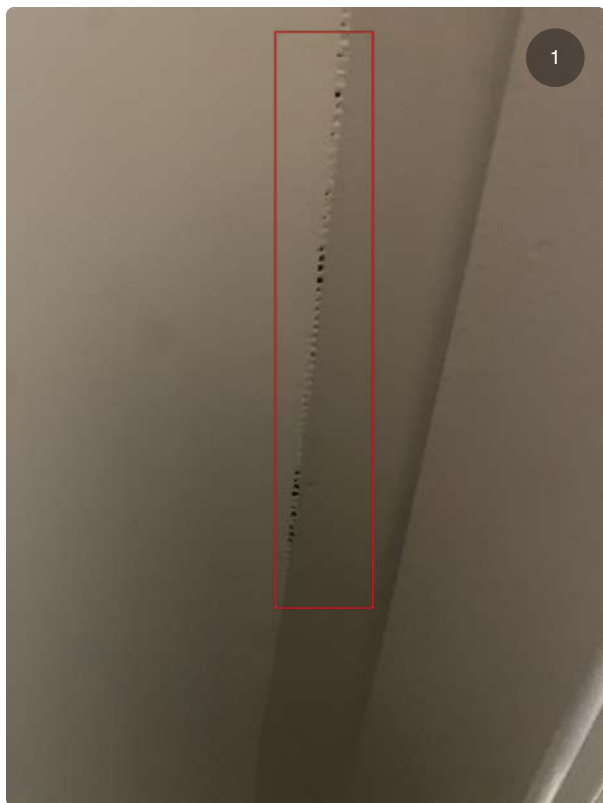
## Snag 75

Indent to wall



## Snag 76

Poor finish to wall left side of the architrave



## Snag 77

Improve finish to right window reveal

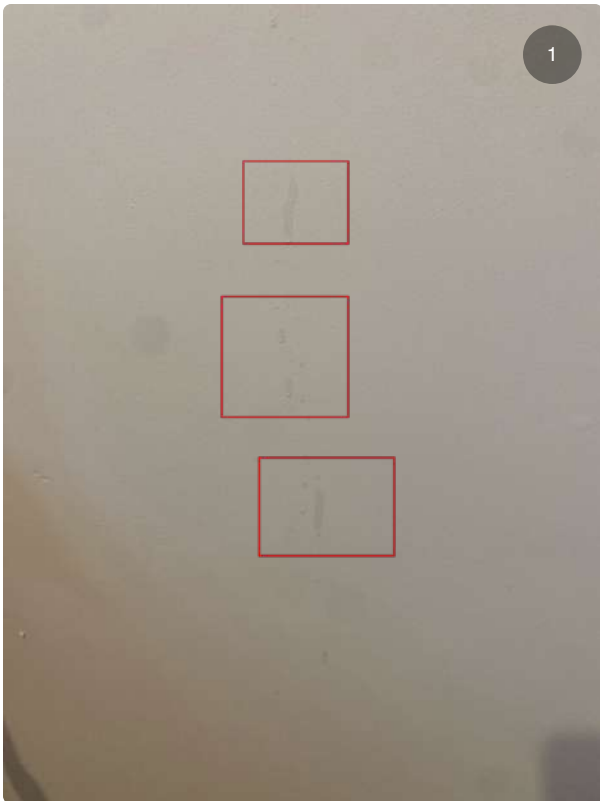


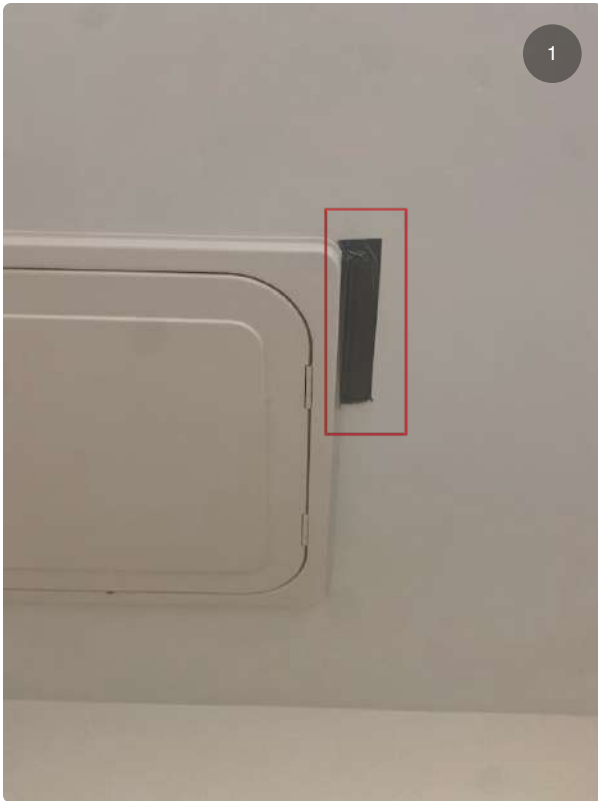
## Snag 78

Scuff mark to leading edge of the door

## Snag 79

Poor finish to wall right side of radiator





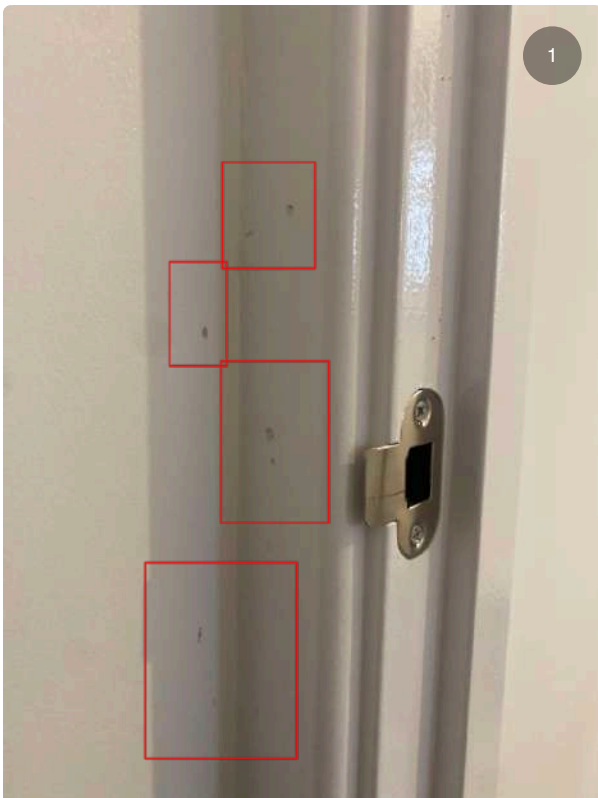
## Snag 80

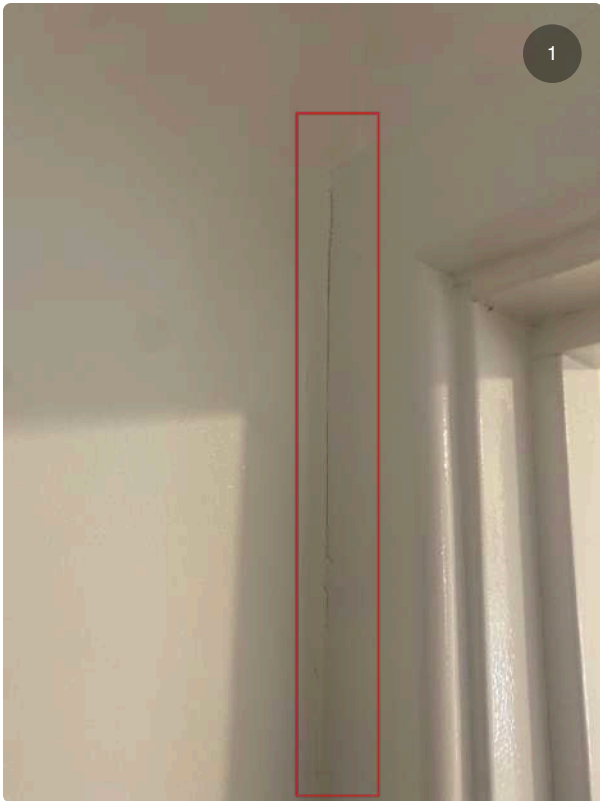
Assigned To: Bedroom 2

Duct tape around loft hatch

## Snag 81

Poor finish to left side of the door architrave





### Snag 82

Shrinkage cracks to left side of door architrave



### Snag 83

Chips to back of the door



## Snag 84

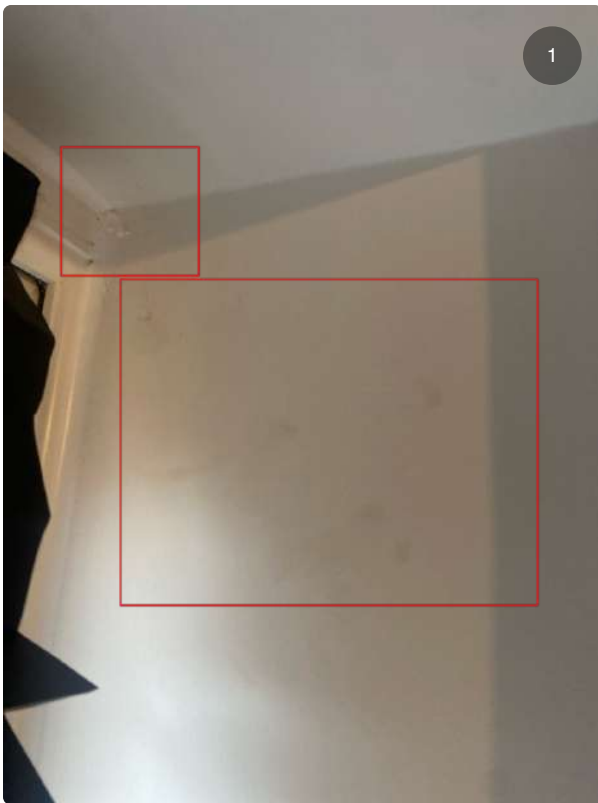
Poor finish to bottom of wall



## Snag 85

Improve finish to left and right window reveals at the bottom



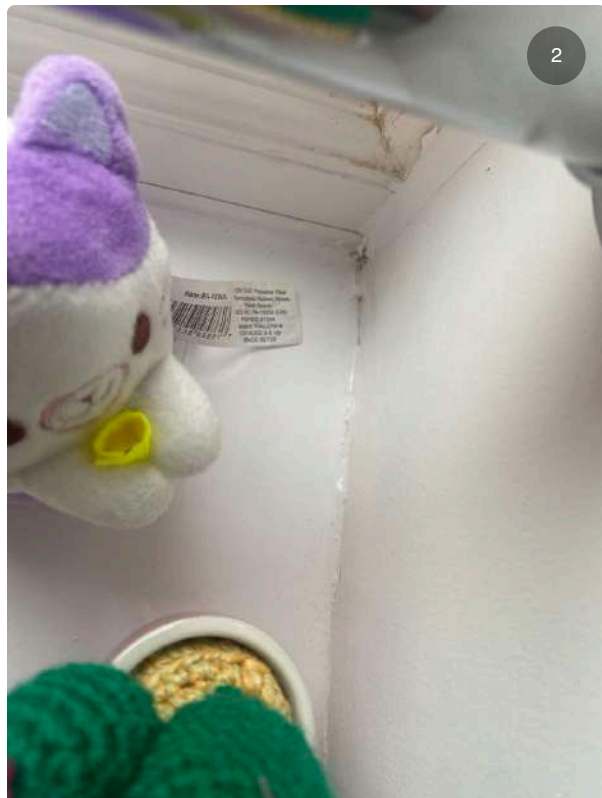


## Snag 86

Dirty marks to top right window  
revela

## Snag 87

Poor finish to left and right window reveal at the bottom





### **Snag 88**

Improve finish to underside of the window board



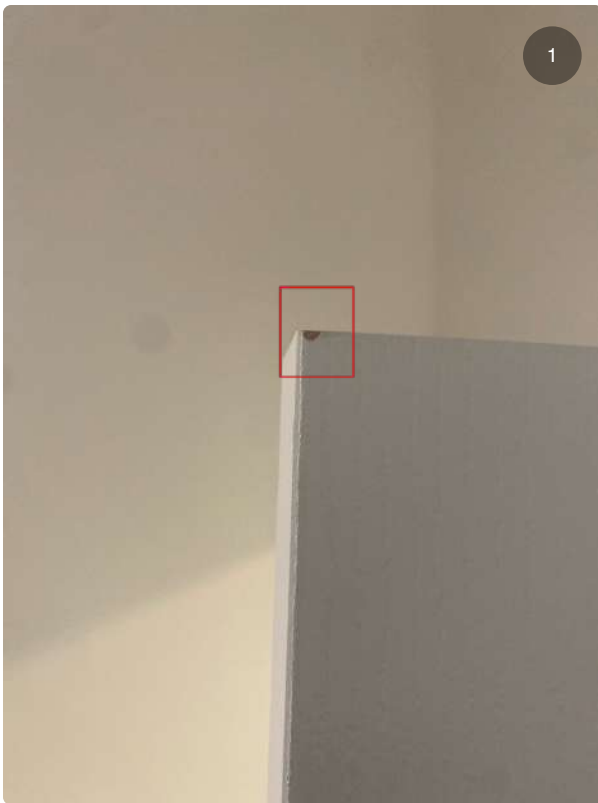
### **Snag 89**

Scuff marks to top of radiator



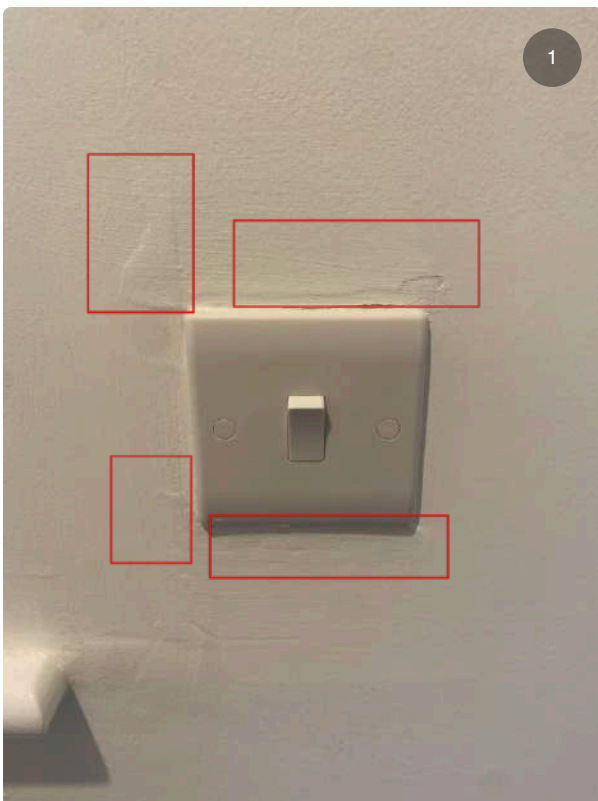
### **Snag 90**

Staining to the wall above the radiator



### Snag 91

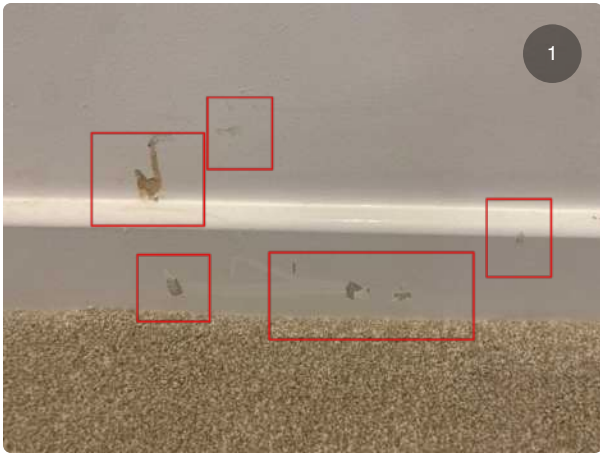
Chip mark to door at leading edge



### Snag 92

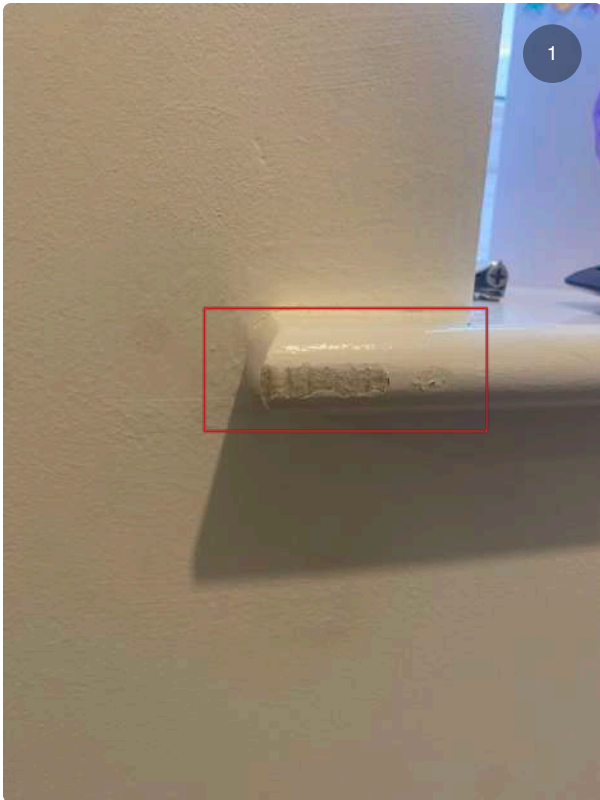
Assigned To: Landing And Stair Case

Improve finish to wall around light switch



### Snag 93

Scuff marks to skirting board left of the radiator



### Snag 94

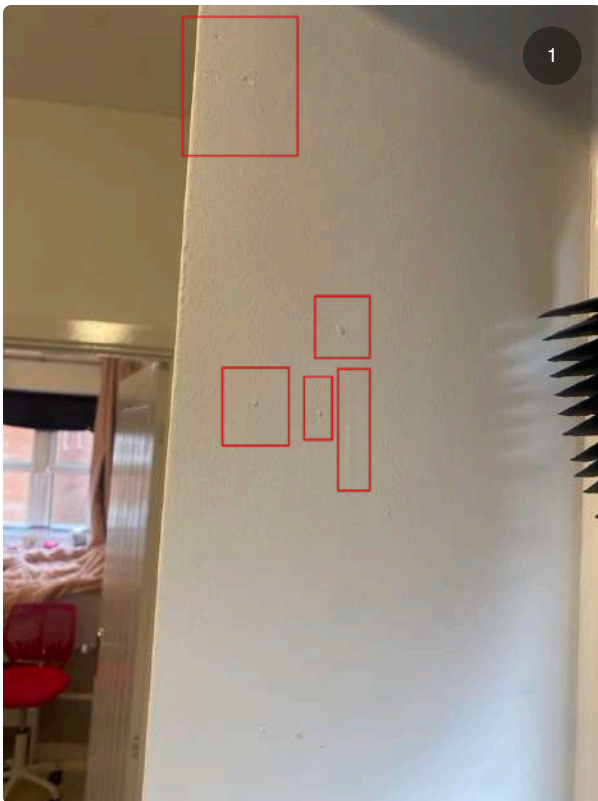
Poor paint finish to left side of window board





### Snag 95

Poor finish to right window reveal

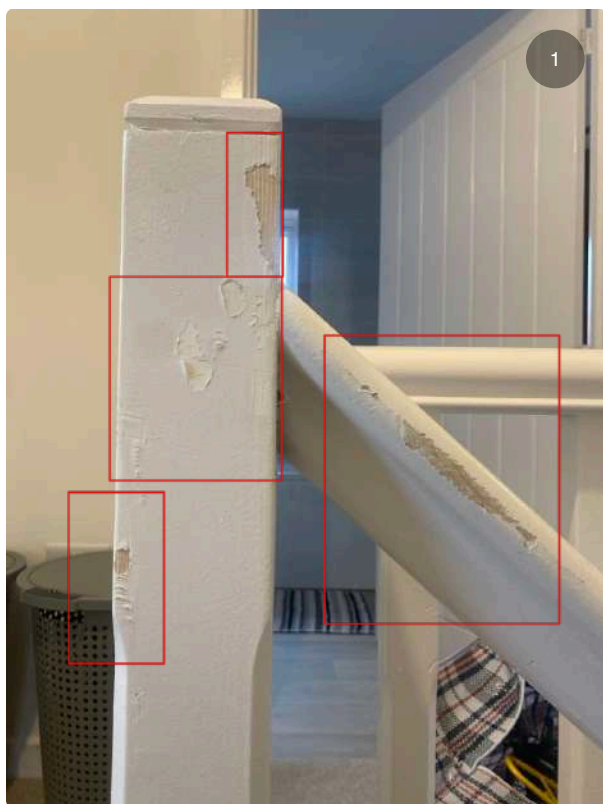
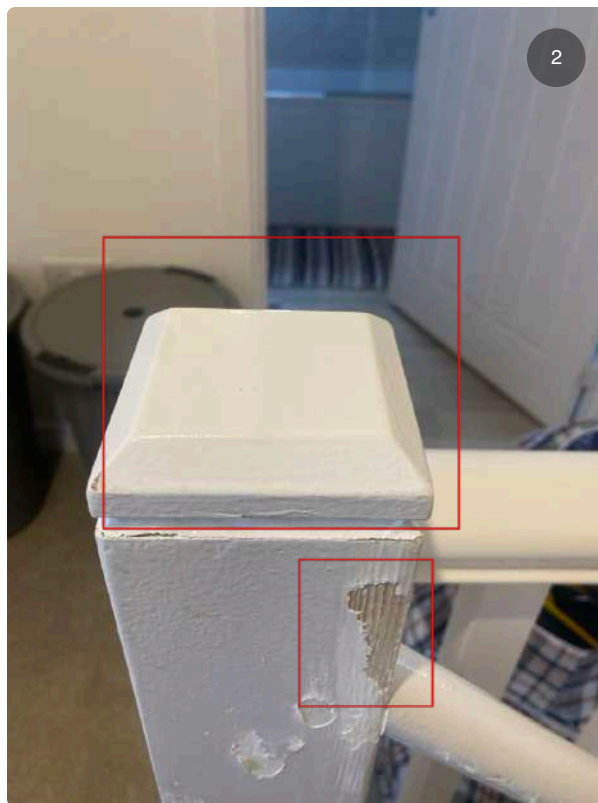


### Snag 96

Poor finish to left window reveal

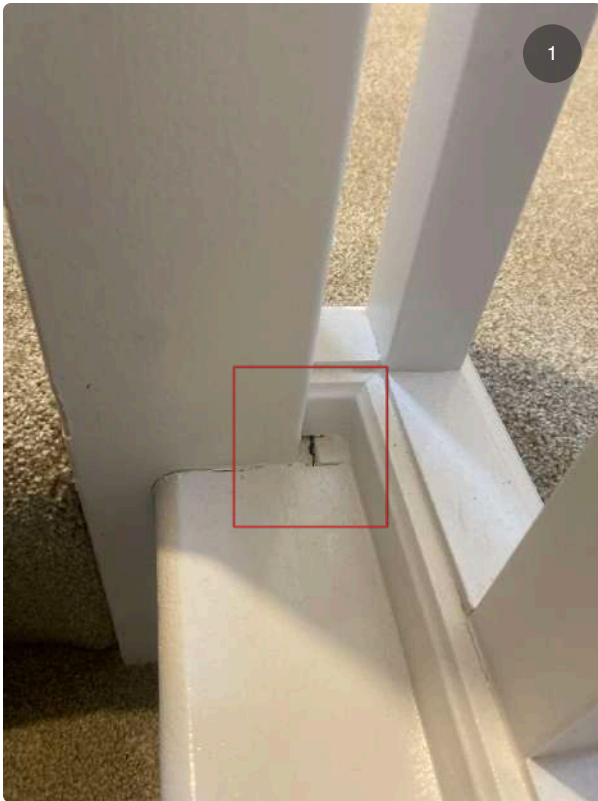
## Snag 97

Poor finish to newel caps



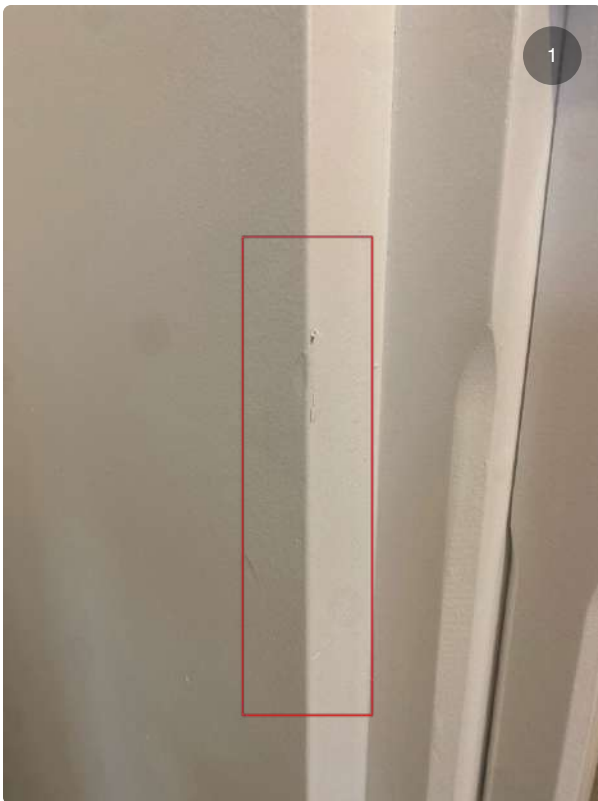
## Snag 98

Re paint newel cap, newel post and handrail



### **Snag 99**

Shrinkage cracks to bottom of right newel post



### **Snag 100**

Improve finish to wall

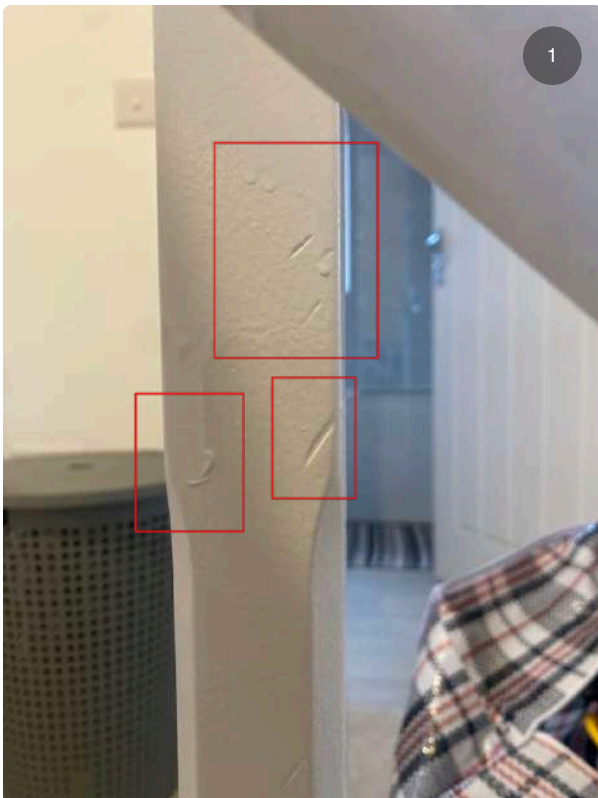


## Snag 101

Chips to wall on the left hand side

## Snag 102

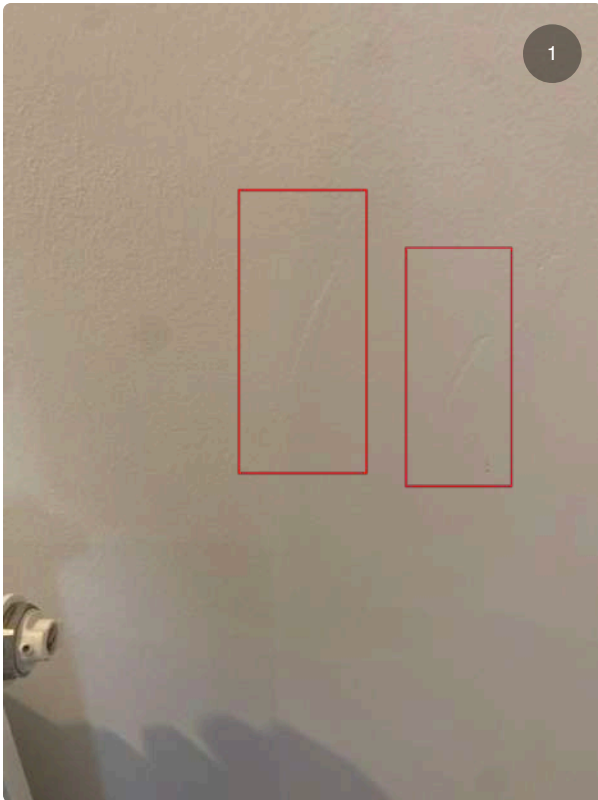
Check finish to all spindles on staircase





### Snag 103

Poor finish to wall around double socket



### Snag 104

Indents to wall right side of the radiator



### Snag 105

Improve finish to ceiling around smoke alarm



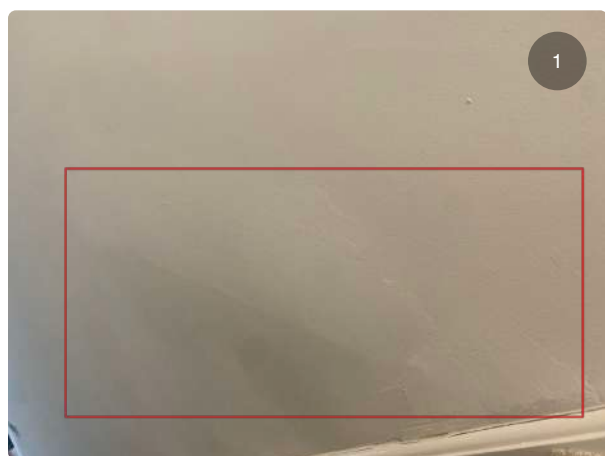
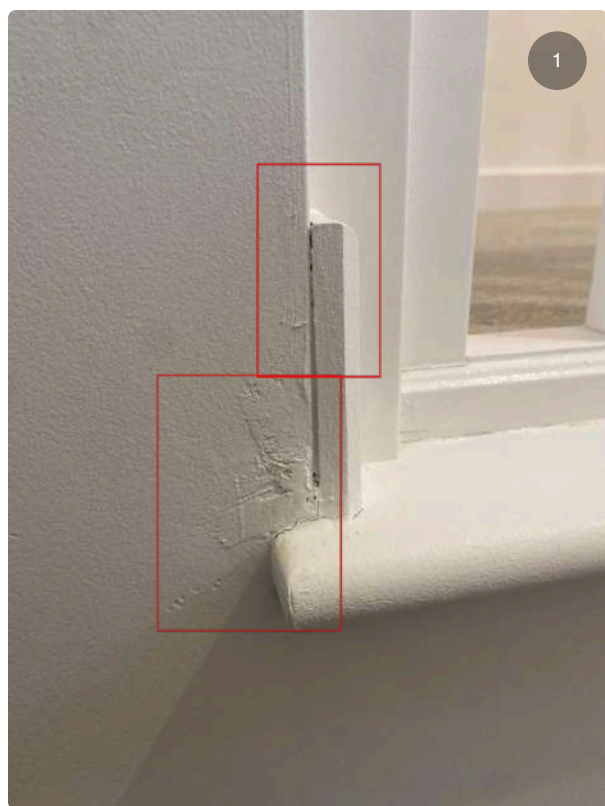
### Snag 106

Scuff marks to handrail



## Snag 107

Improve finish to wall left side of staircase

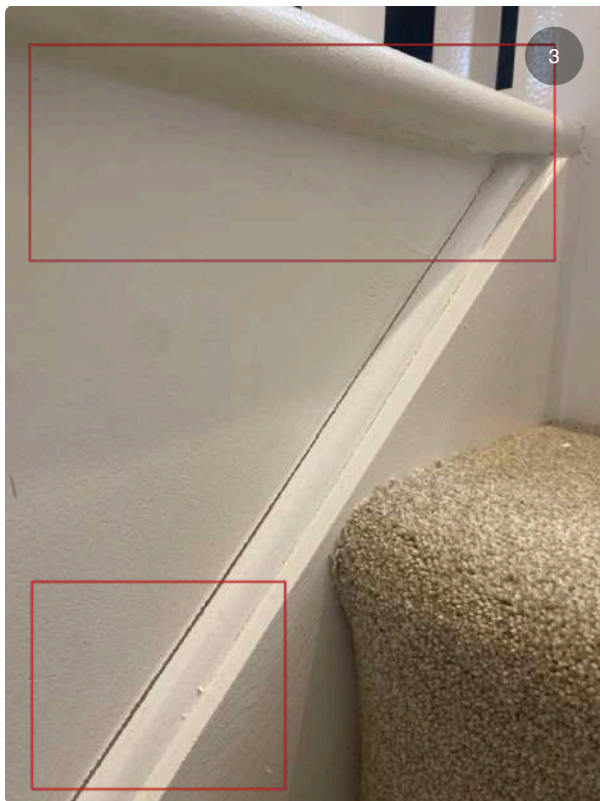
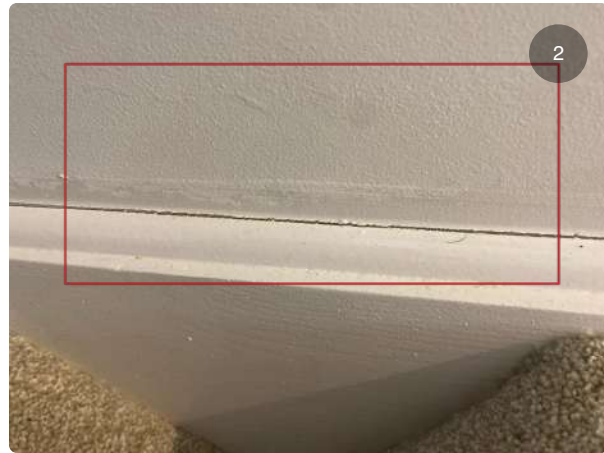


## Snag 108

Poor finish to the wall

## Snag 109

Shrinkage crack to left side off the staircase





### **Snag 110**

Shrinkage cracks to stair stringer



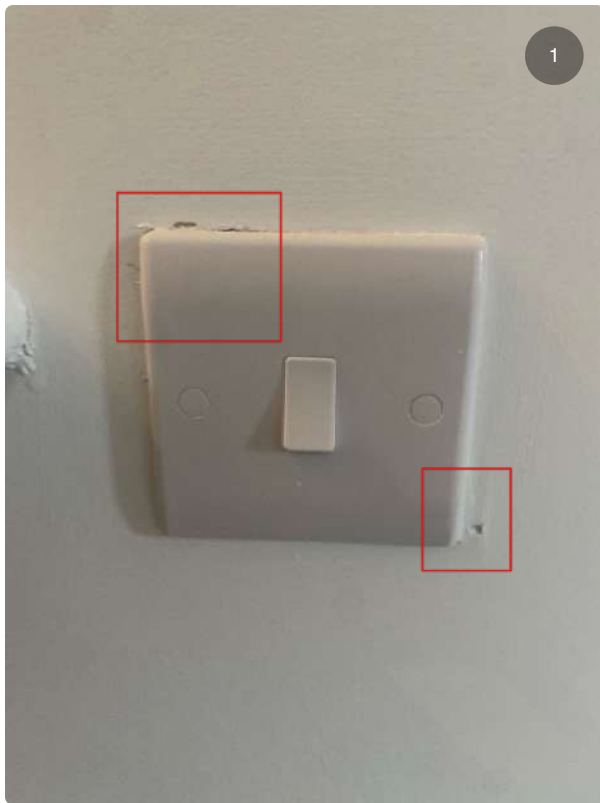
### **Snag 111**

Poor finish to ceiling



### **Snag 112**

Gloss paint on wall underside hand rail



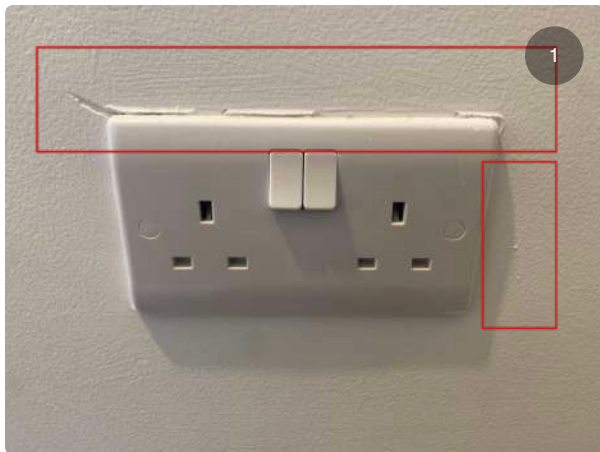
### Snag 113

Assigned To: Ground Floor Hallway

Improve finish around the light switch

### Snag 114

Improve finish around double socket and wall area







## Snag 115

Thermostat not level

## Snag 116

Improve finish around thermostat

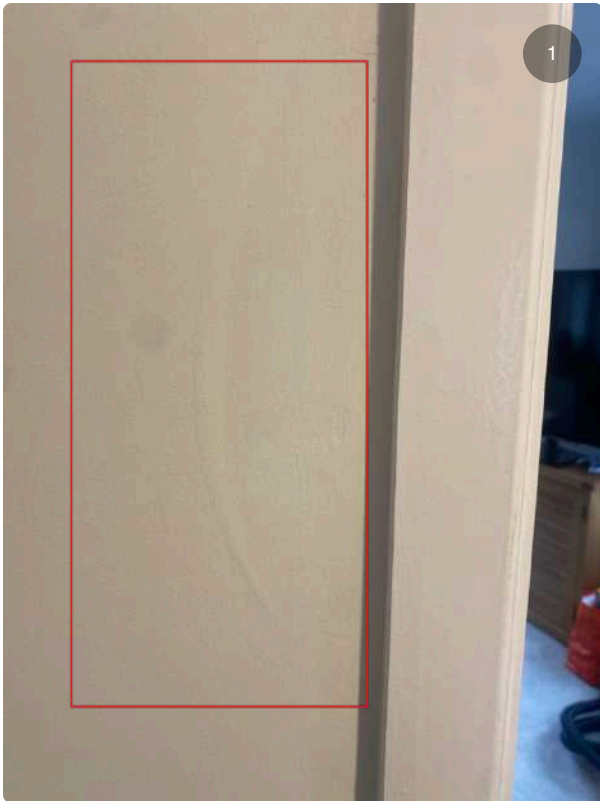


## Snag 117

Improve finish to wall







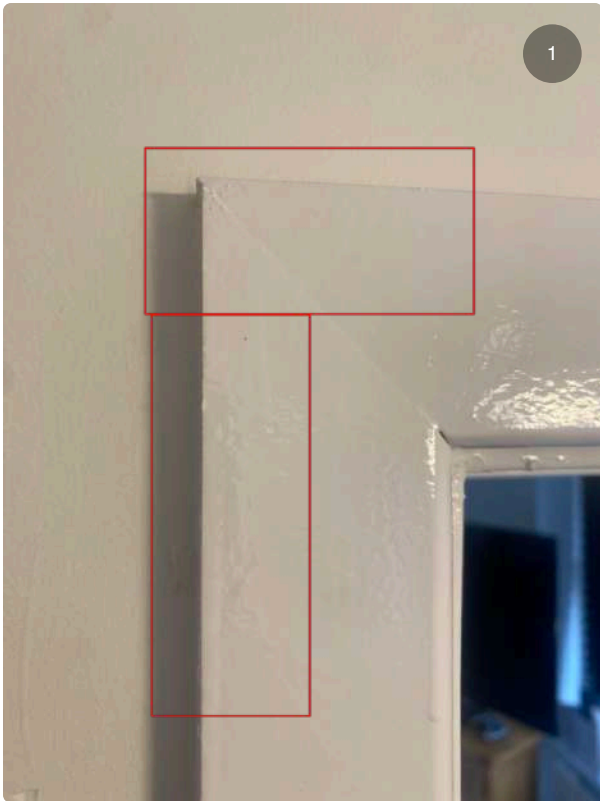
### Snag 118

Improve finish to wall left side of the architrave



### Snag 119

Improve finish to left side architrave



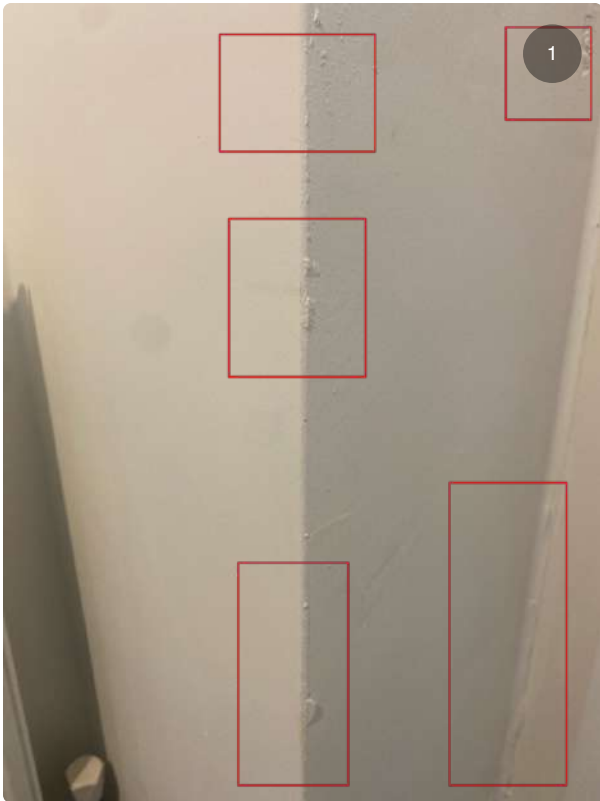
### Snag 120

Improve finish to top left of architrave



### Snag 121

Improve finish to top right of lounge door frame



## Snag 122

Improve finish to left door reveal

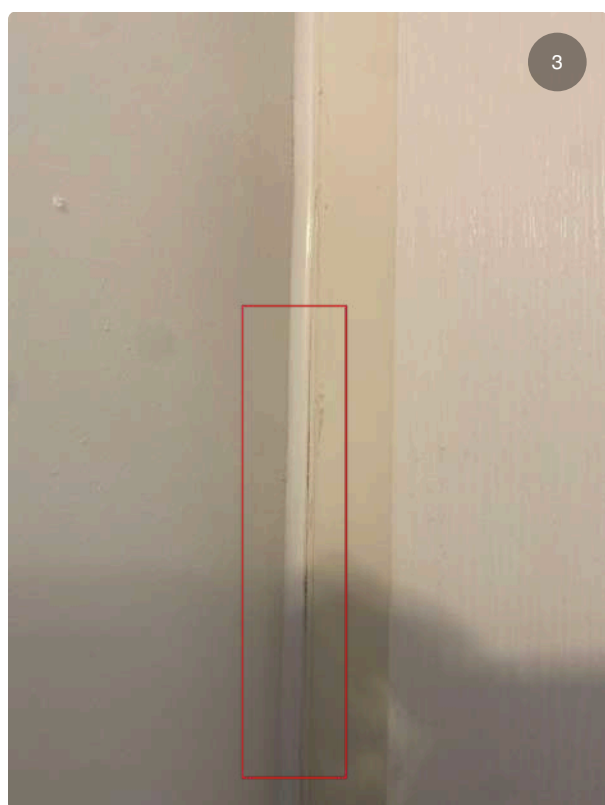
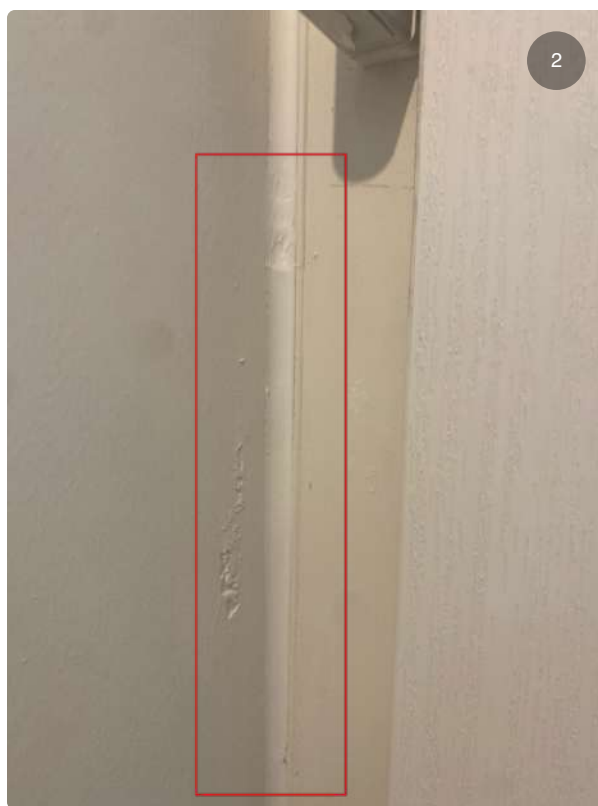


## Snag 123

Chips to skirting and painted poorly

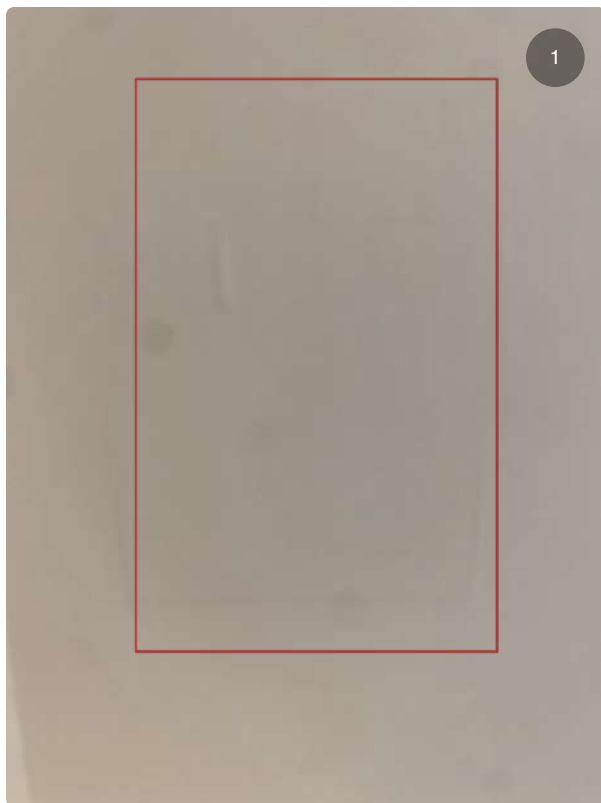
## Snag 124

Improve mastic finish to left side of the front entrance door



## Snag 125

Patch to ceiling by door bell



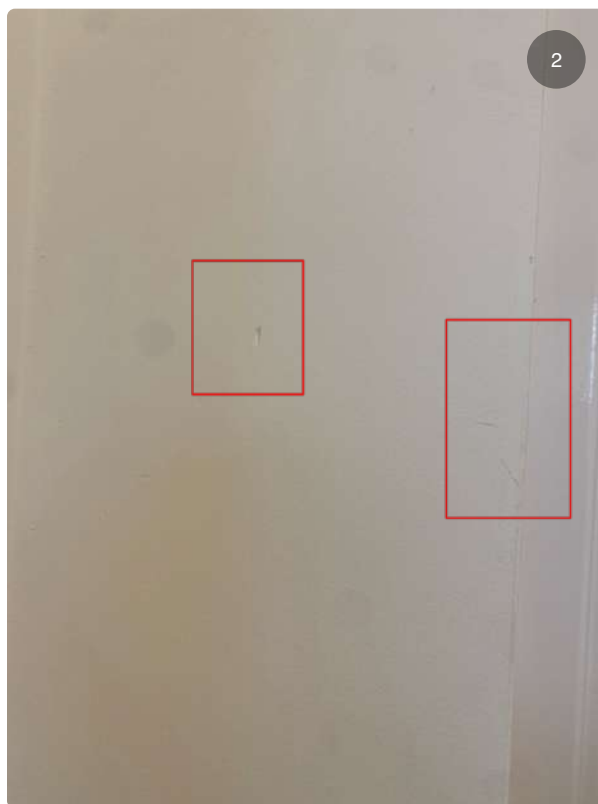
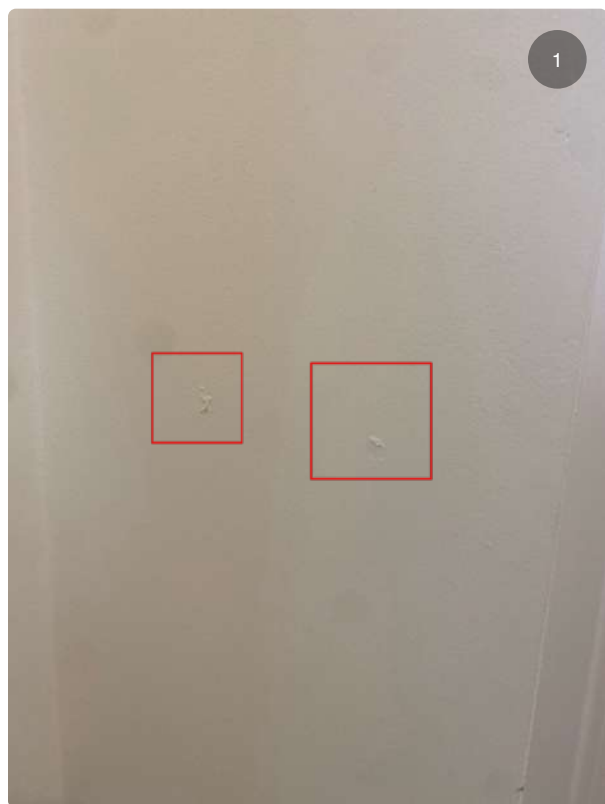
## Snag 126

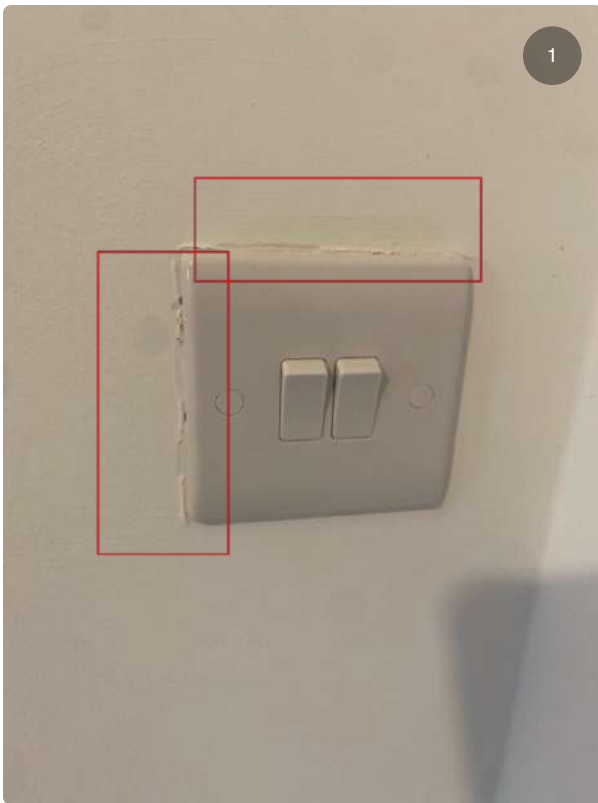
Improve finish to skirting right side of front entrance door



## Snag 127

Improve finish to wall right side of front entrance door





### Snag 128

Improve decoration around socket



### Snag 129

Improve finish to ceiling around smoke alarm



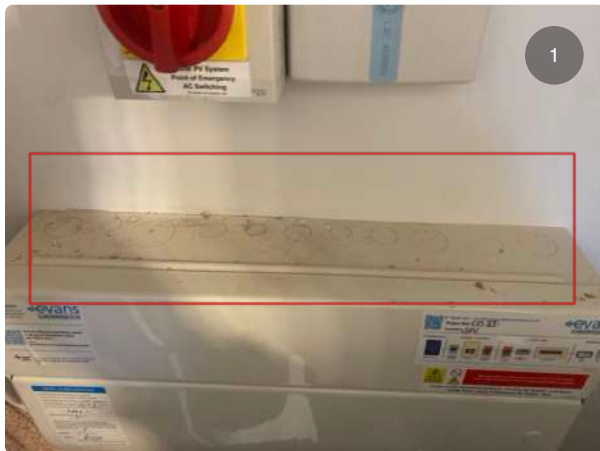
## Snag 130

Improve finish around light pendant

## Snag 131

Assigned To: Store Room

Clean top of consumer unit and tidy wall finish



## Snag 132

Scuff marks to bottom of store door



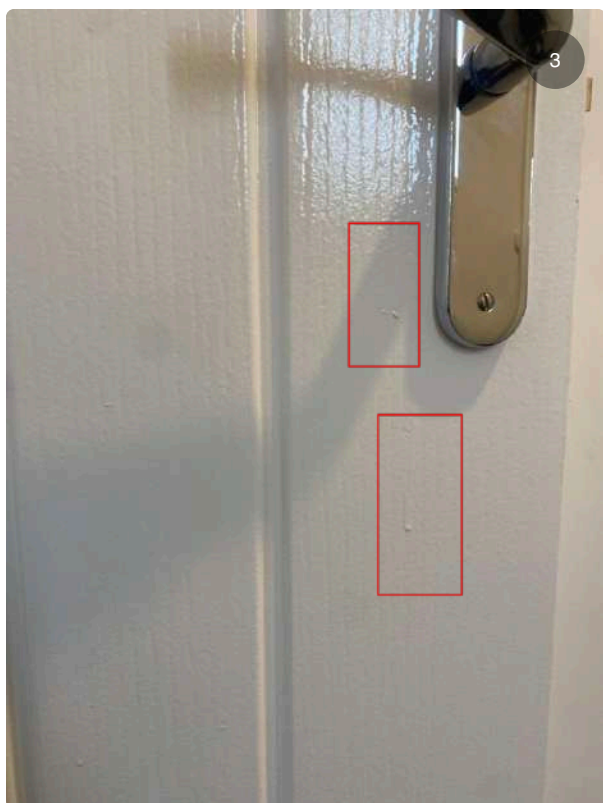
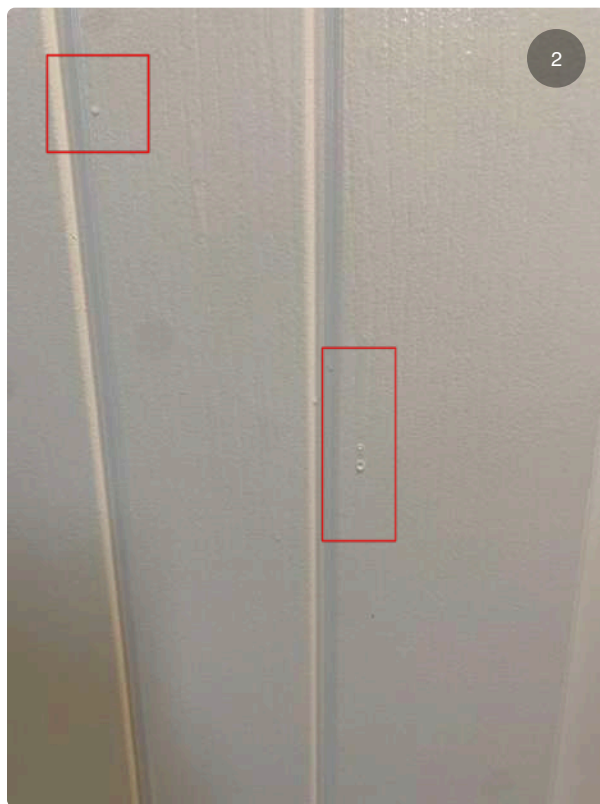
## Snag 133

Clean hinges top and middle



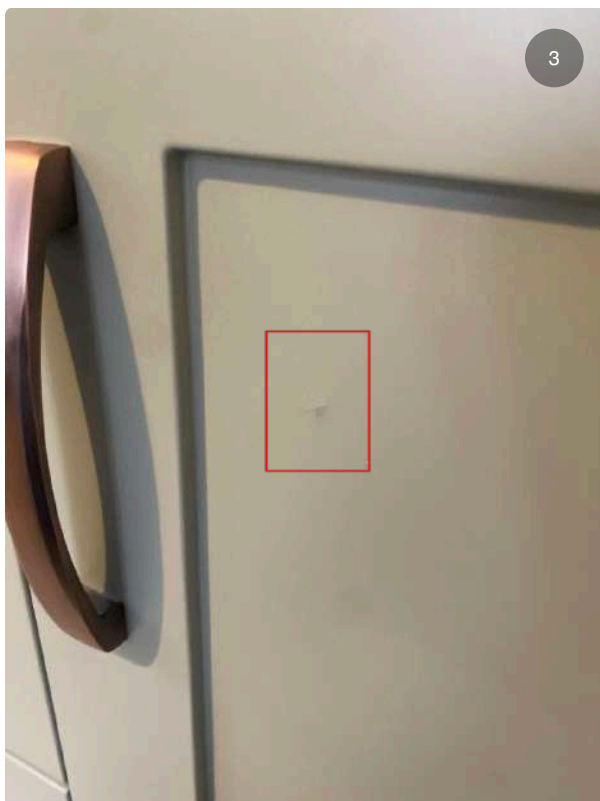
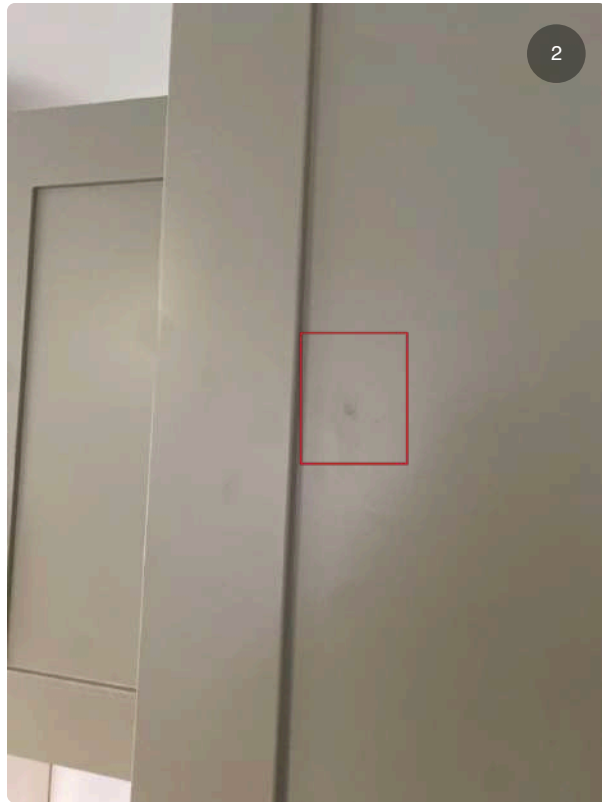
## Snag 134

Scuff marks to face of door

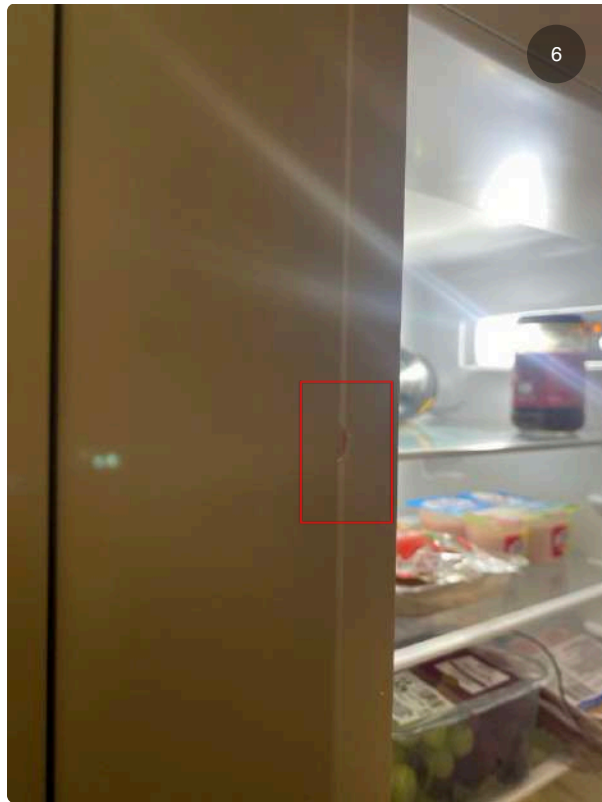


## Snag 135

Damages to fridge freezer







## Snag 136

Handle loose





### Snag 137

Socket higher than the rest. Should be all uniformed to one level



### Snag 138

Hob not square

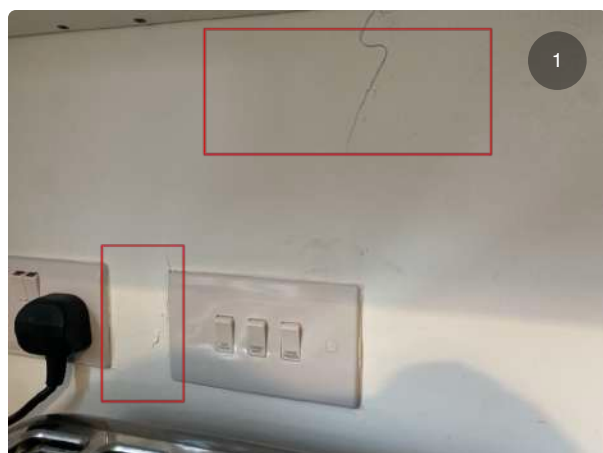


### Snag 139

Cooker hood not straight

## Snag 140

Improve decoration around socket and clean paint off sockets



## Snag 141

Plinth seal not sitting on floor



## Snag 142

Mastic to be applied around sink



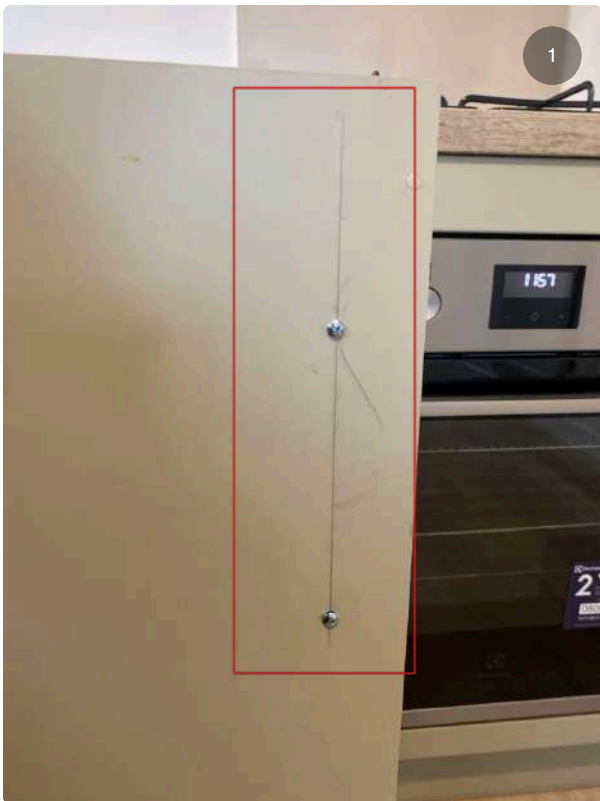
## Snag 143

Jubilee clip missing



### Snag 144

Remove blue strip



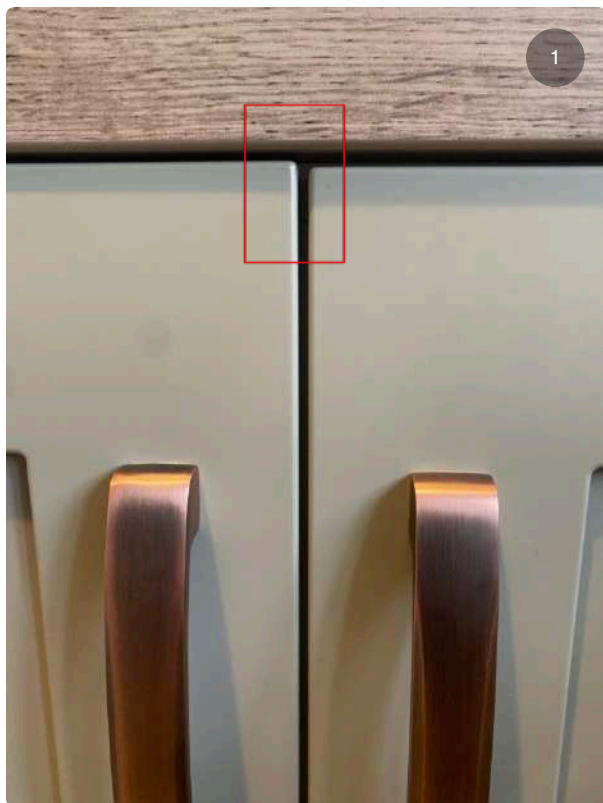
### Snag 145

Pencil marks to base unit



## Snag 146

Cupboard not align



## Snag 147

Improve finish left window reveal





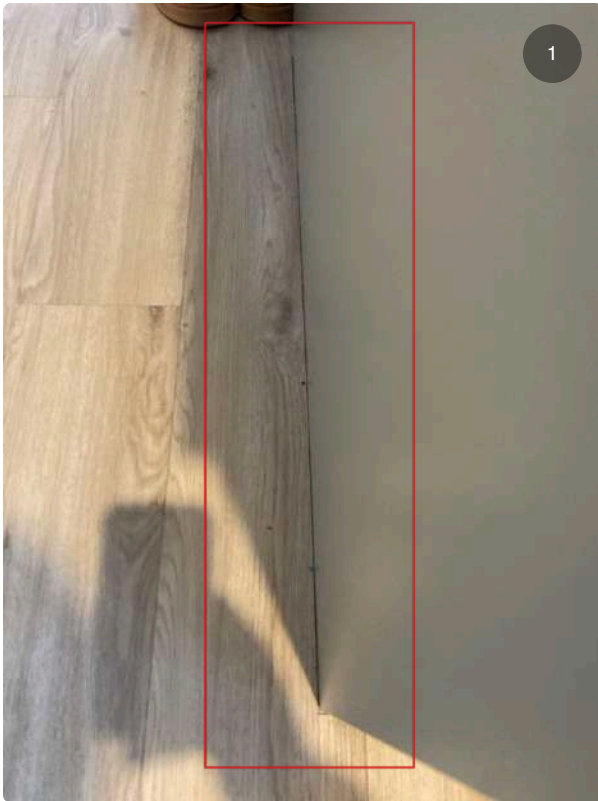
### Snag 148

Improve finish right window reveal



### Snag 149

Improve finish to right window reveal



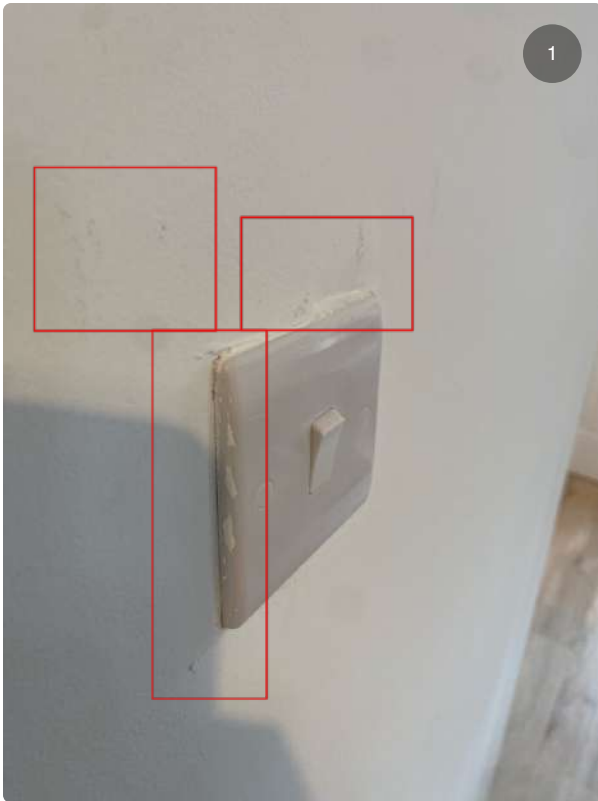
### Snag 150

Mastic missing missing to end panel



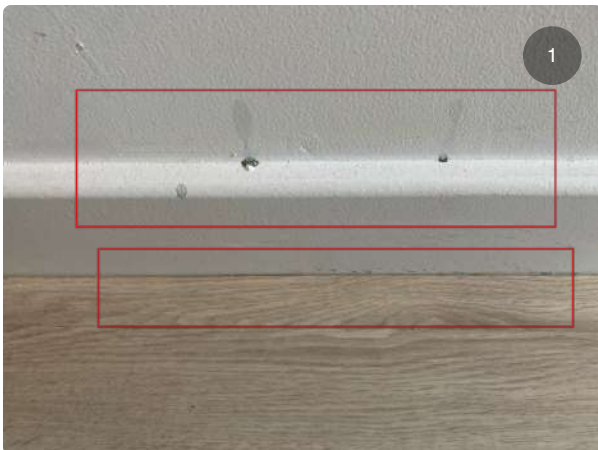
### Snag 151

Poor finish skirting by fridge freezer



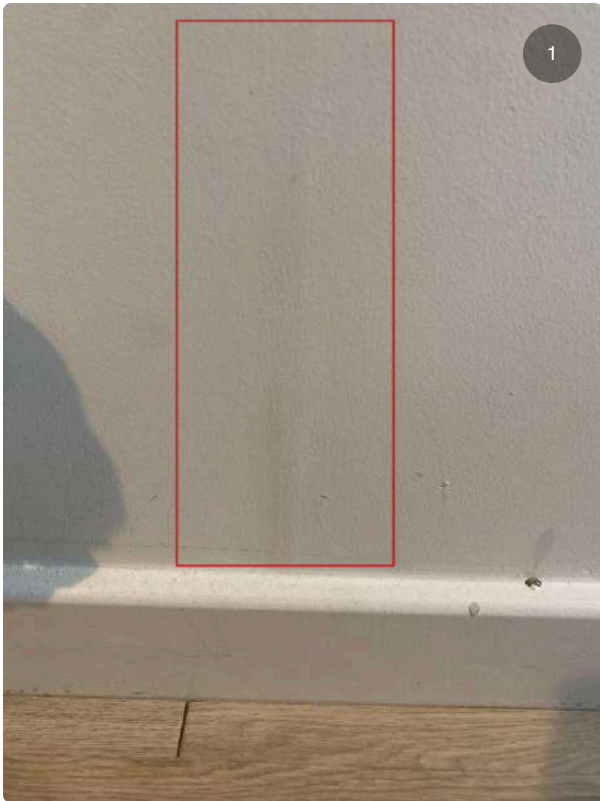
### Snag 152

Kitchen light socket embedded in wall



### Snag 153

Green stain to top of skirting board



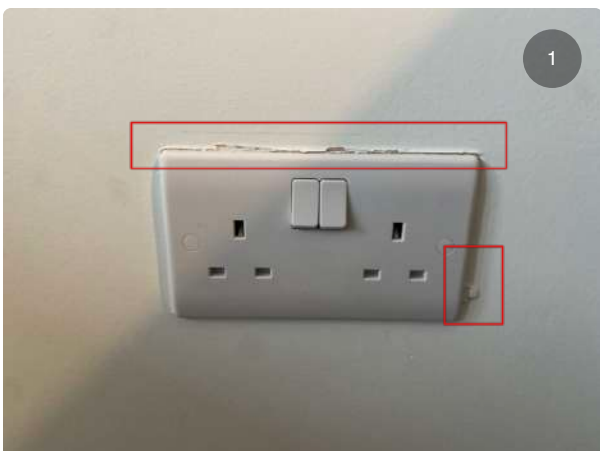
### Snag 154

Bulge in wall right side of side of the radiator



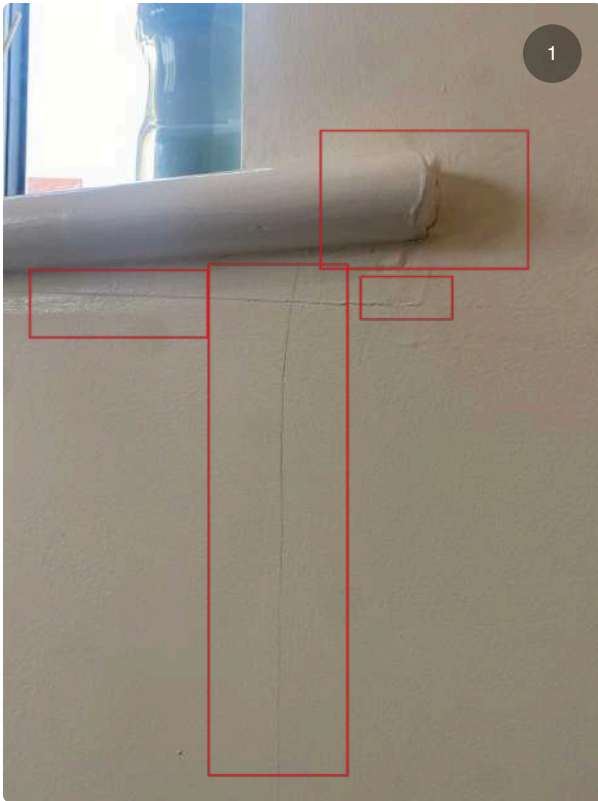
### Snag 155

Work top not sitting flush on end panel



### Snag 156

Improve finish to double socket



### Snag 157

Poor finish to right side of window board

### Snag 158

Poor finish to wall and skirting board underside of window





### Snag 159

Blue stains to skirting



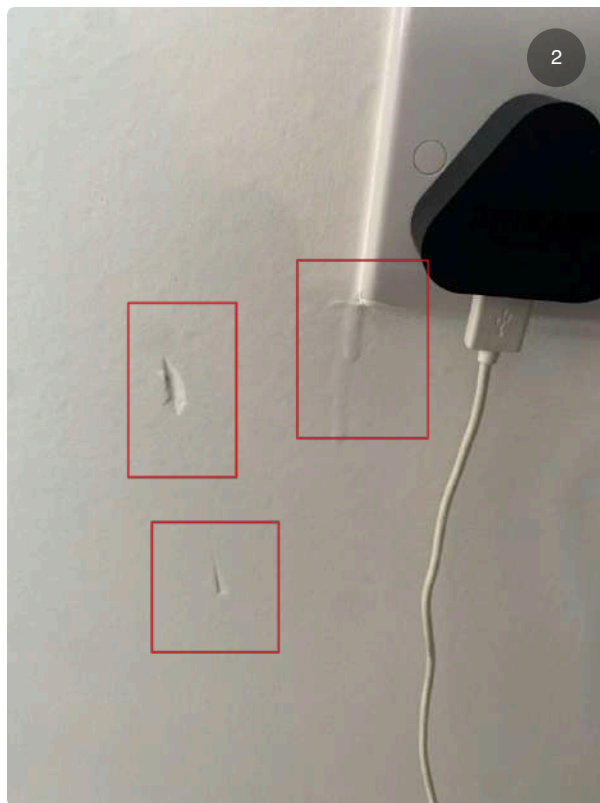
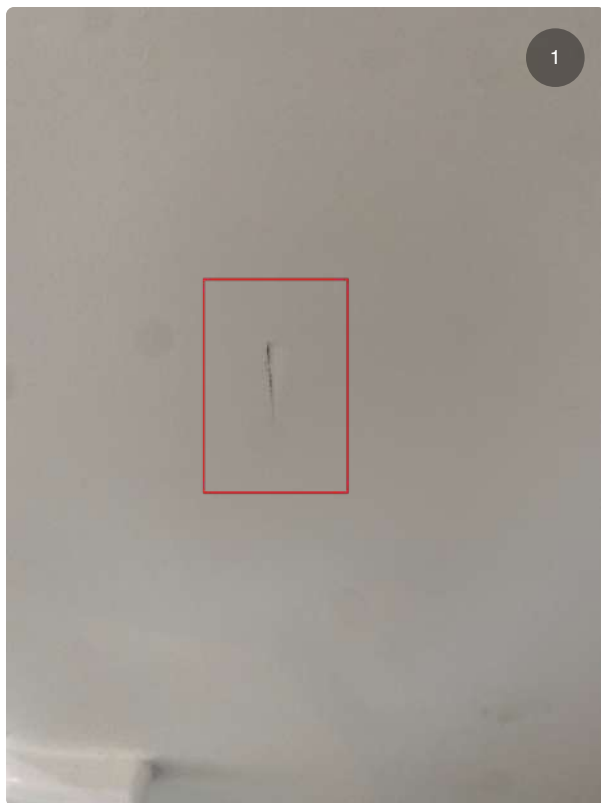
### Snag 160

Double socket not level and stains to switch



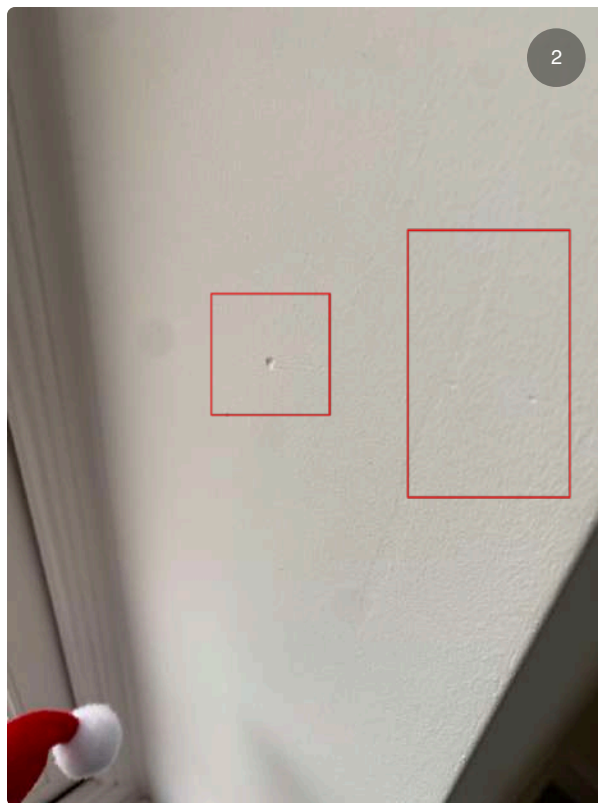
## Snag 161

Improve finish wall right of radiator - digs to wall



## Snag 162

Improve finish to right window reveals



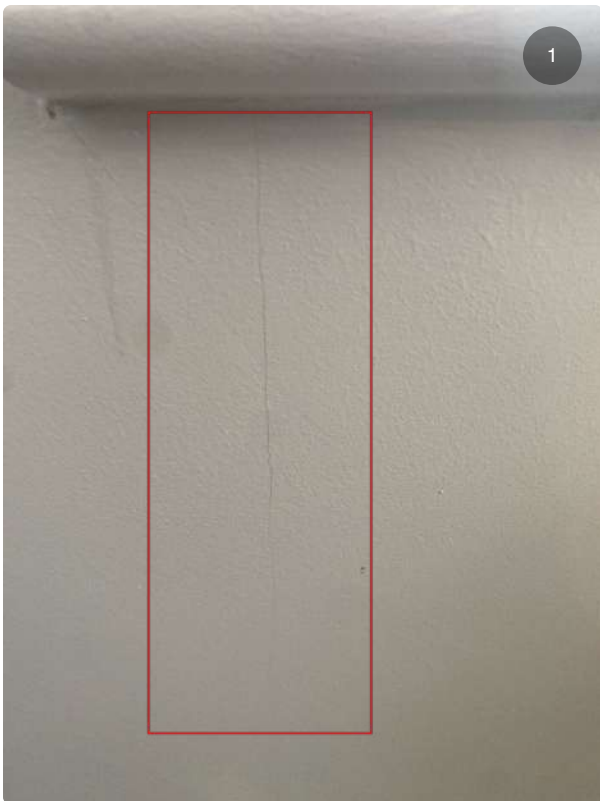
## Snag 163

Scuff marks to skirting left of radiator



### **Snag 164**

Flooring lifting left side of radiator

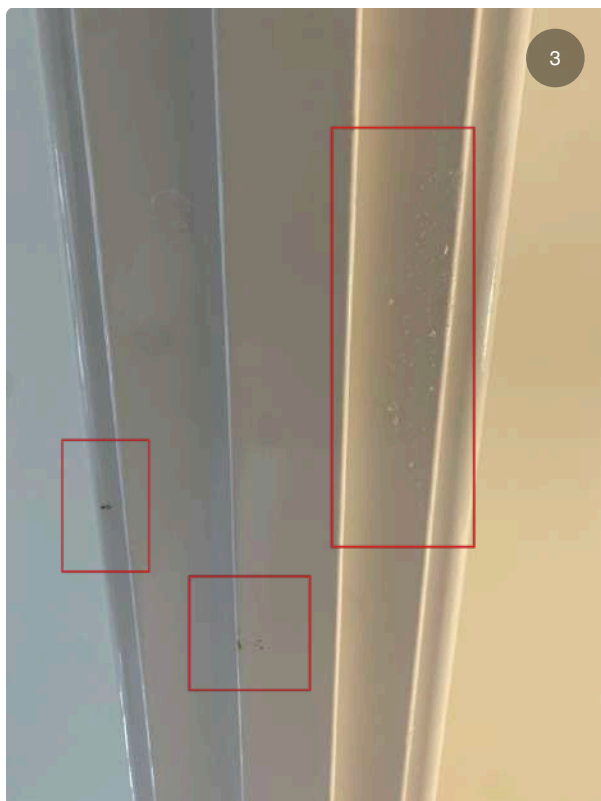


### **Snag 165**

Board joint crack left of window board

## Snag 166

Improve finish to door frame





**Snag 167**  
Assigned To: Lounge  
Carpet stain



**Snag 168**  
Improve finish right of patio door



**Snag 169**  
Draft can be felt



### Snag 170

Black gasket not installed properly



### Snag 171

Paint drip to underside of window board





**Snag 172**  
Improve finish

## Snag 173

Improve finish to right and left of patio door





### Snag 174

Assigned To: External

Raw plugs on show



### Snag 175

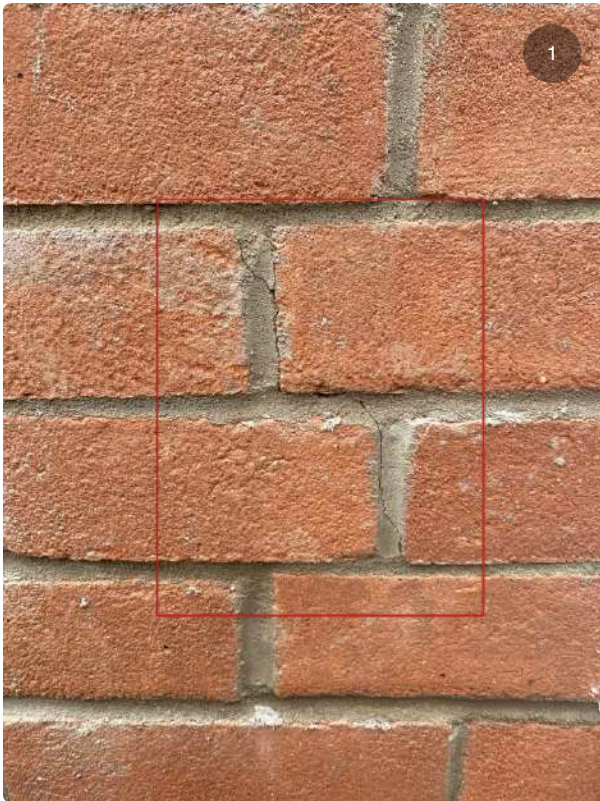
Black trim not installed properly  
right side of patio door



## Snag 176

Clean brick work to rear of house





### Snag 177

Crack to mortar right side of patio door. Check all brick work as this in various areas around the property



### Snag 178

Clean top of garden wall



## Snag 179

Seal cable and end cap missing on garage door external threshold



## Snag 180

Gap between fascia and guttering.  
Nail also protrudes out



## Snag 181

Clean guttering and fascia board



## Snag 182

Clean down pipe





### Snag 183

Dirty meter boxes.



### Snag 184

Remove tape off garage door



### Snag 185

Brick work not straight right side of garden gate



### Snag 186

Down pipe not connected



### **Snag 187**

Seal around plastic conduit pipe



### **Snag 188**

Damage to meter box





### Snag 189

Cracking to mortar right side of kitchen window



### Snag 190

Clean brickwork to front of house



### Snag 191

Cracked paving slab by front entrance door



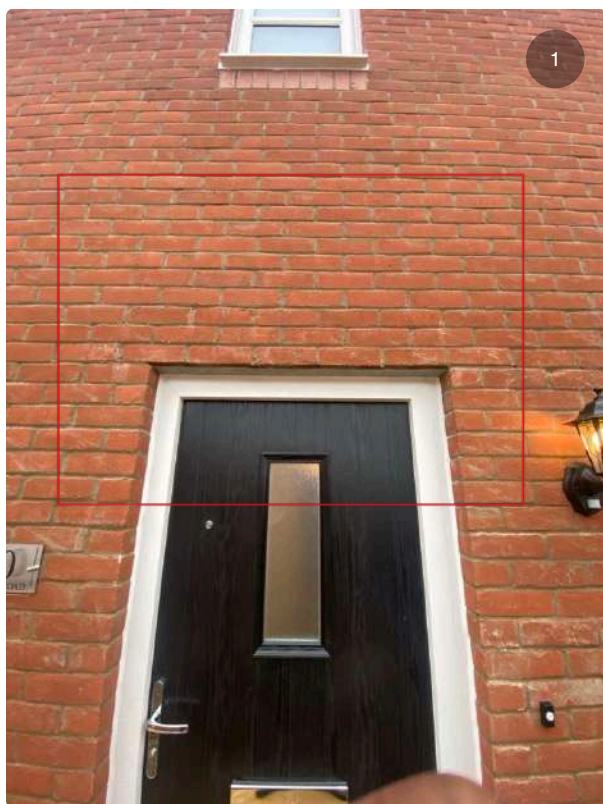
### Snag 192

Internet cable coiled up not protected



## Snag 193

Scratch to front entrance door



## Snag 194

Front porch not fitted





### Snag 195

Remove glue off brickwork



### Snag 196

Clean brickwork underneath  
bedroom 1 window



### Snag 197

Damaged / dirty brick work to left side of front door



### Snag 198

Tape left on window

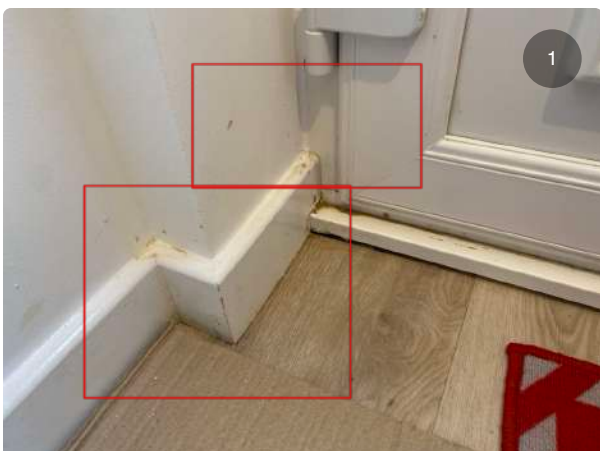


**Snag 199**



**Snag 200**

Bottom of cloak room door not sealed

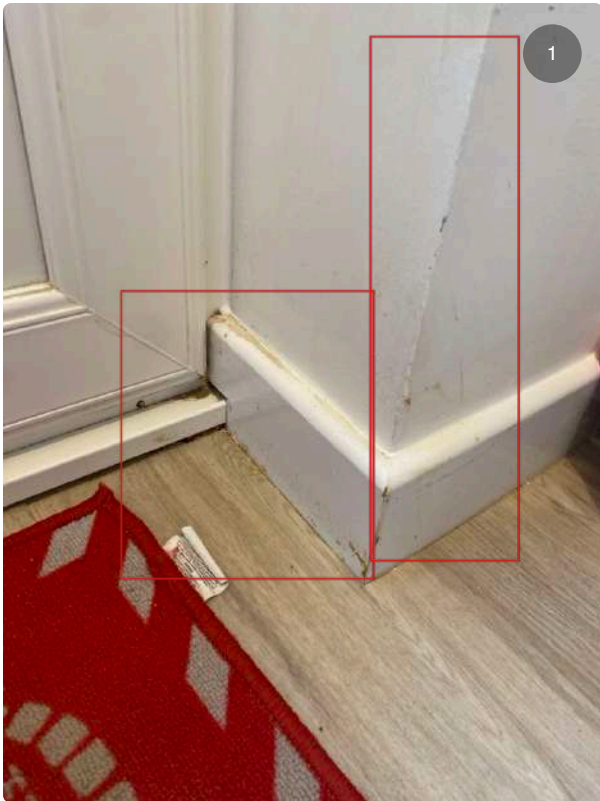


**Snag 201**

Assigned To: Utility Room

Dirty marks to left side of door





## Snag 202

Poor finish to right of door



## Snag 203

Scuff marks to right side of door reveal



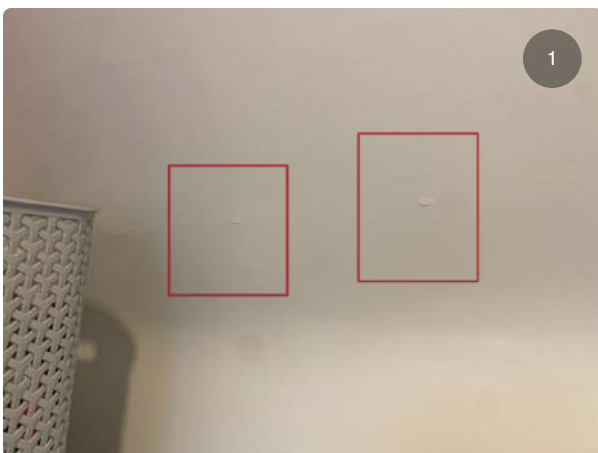
### Snag 204

Dust within extractor fan



### Snag 205

Chip to bottom left of door frame



### Snag 206

Indents to walls



### Snag 207

Scuff mark to pedestal also  
pedestal not fitted properly



### Snag 208

Dirty marks to back of door





### Snag 209

Pencil marks to extractor fan

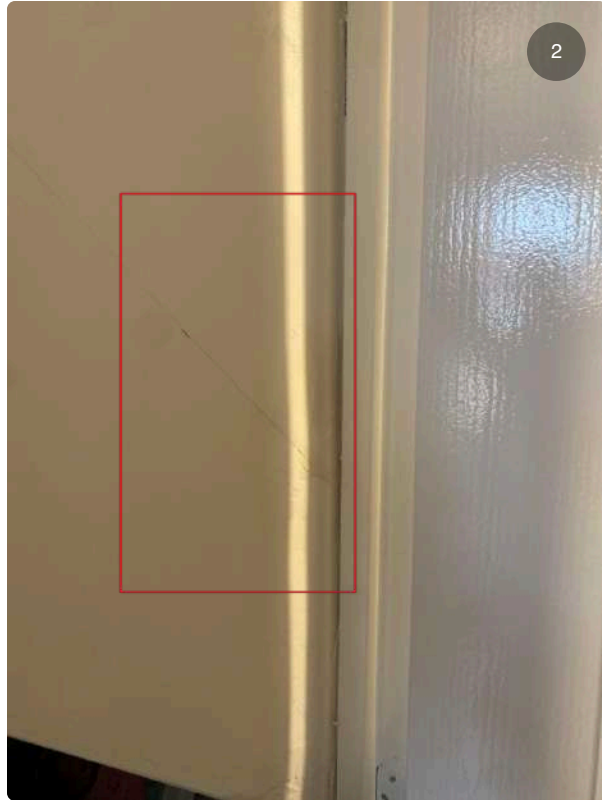
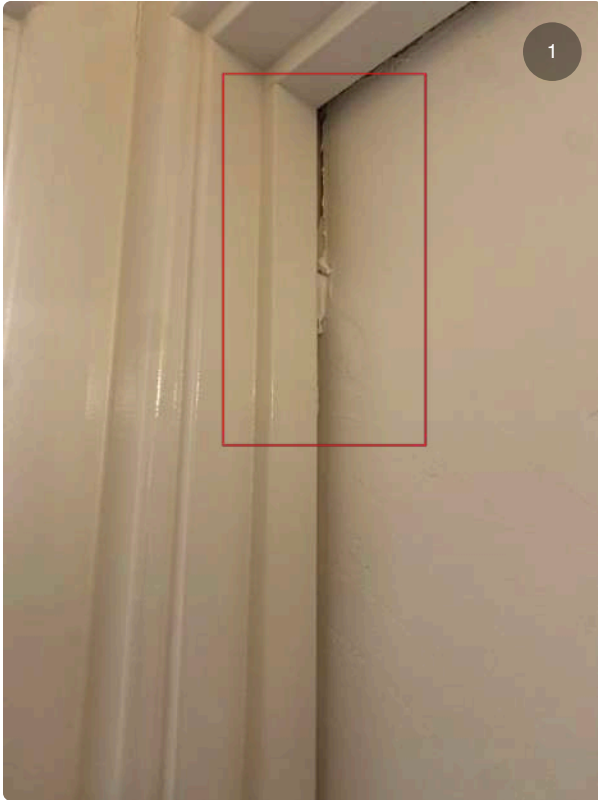


### Snag 210

Chip to door underside of top hinge

## Snag 211

Poor finish to wall right side of store room in ground floor toilet area



## Snag 212

Clean paint off socket and hole to wall above the socket



## Snag 213

Assigned To: Loft

Plastic cover still left on fire alarm , also vent not connected to nothing

