



Sample Report!

4 bedroom house

Sunday, 12 November 2023

Inspected By Snag My New Home

185 Snags Identified

Snag My New Home 



Front Elevation Snag 1
Cap missing on canopy ridge



Snag 2
Top up stone



Snag 3

Remove stains off slabs



Snag 4

secure light loose



Snag 5

Point up edge of reveals



Snag 6

Bracket missing on downpipe



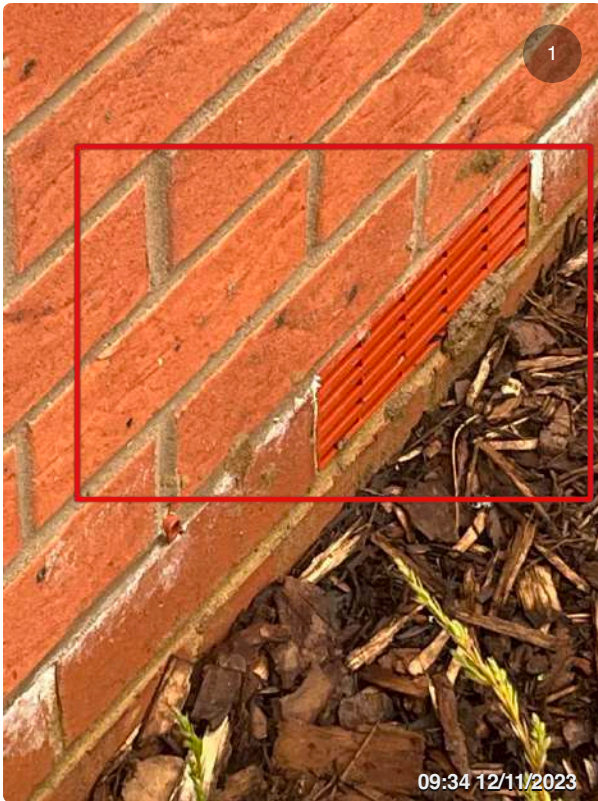
Snag 7

Drill in screw on inspection chamber



Snag 8

Residue on inspection chamber that needs cleaning



Snag 9

Remove mortar stains off DPC



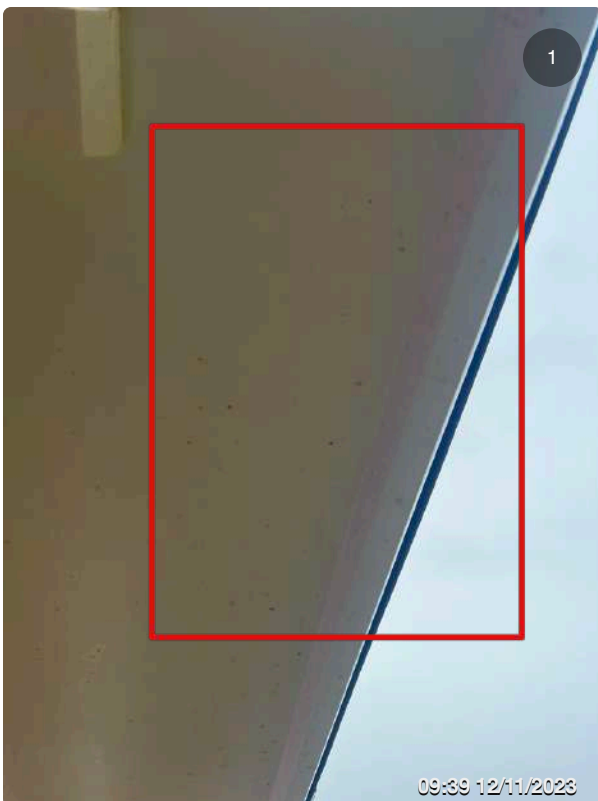
Snag 10

Point up edge on reveal



Snag 11

Scratch marks on downpipe needs polishing out and RWP not straight.



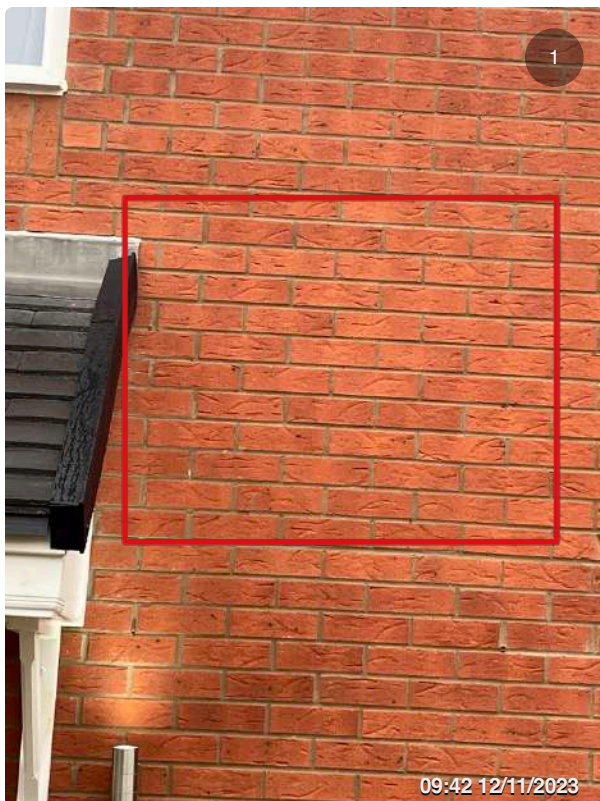
Snag 12

Clean stains from under canopy



Snag 13

Mastic not straight on led



Snag 14

Mortar spots on brickwork needs brick acid and jetwash



Snag 15

Mortar needs redoing l/h/s to window



Snag 16

Brick acid retaining wall and remove stains



Snag 17

Remove snots off vents



Snag 18

Tidy cable with another tie



Left Hand Elevation Snag 19

Remove debris off weep vent



Snag 20

Section of brickwork not same batch as other brickwork



Snag 21

Drain heavy corroded. Remove tarmac debris inside chamber



Snag 22

Cracks in edge kerbs monitor thoroughly



Snag 23

Repoint around weep vent



Snag 24



Hall Snag 25

Scuff stain on bottom hinge front door.



Snag 26

Clean paint stains from lock



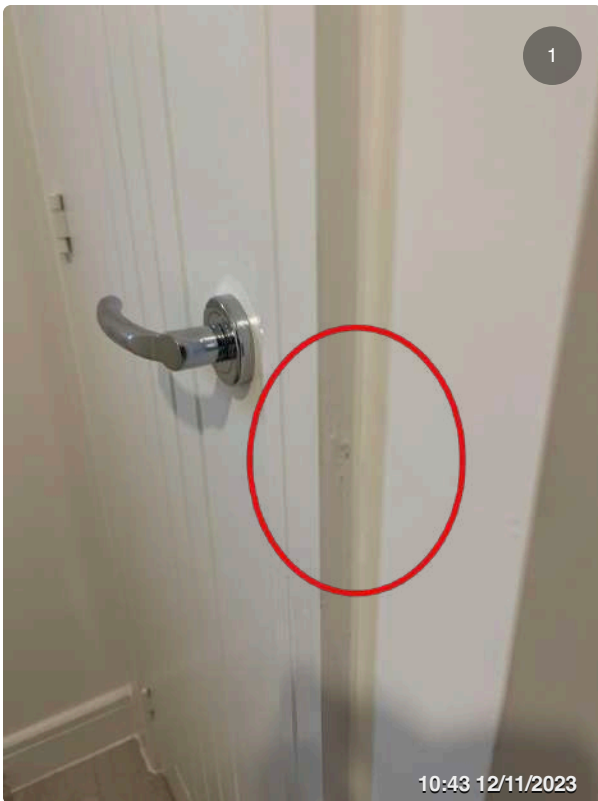
Snag 27

Poor finish at bottom skirting



Snag 28

Damage radiator at top grids



Snag 29

Touch up edge of architrave



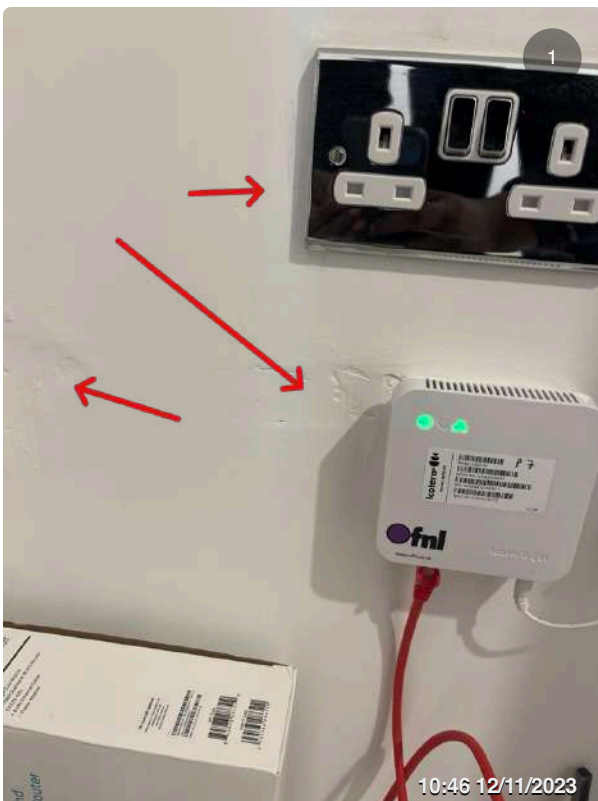
Snag 30

Play in door rattles when closed



Snag 31

Paint internal architrave in consumer unit



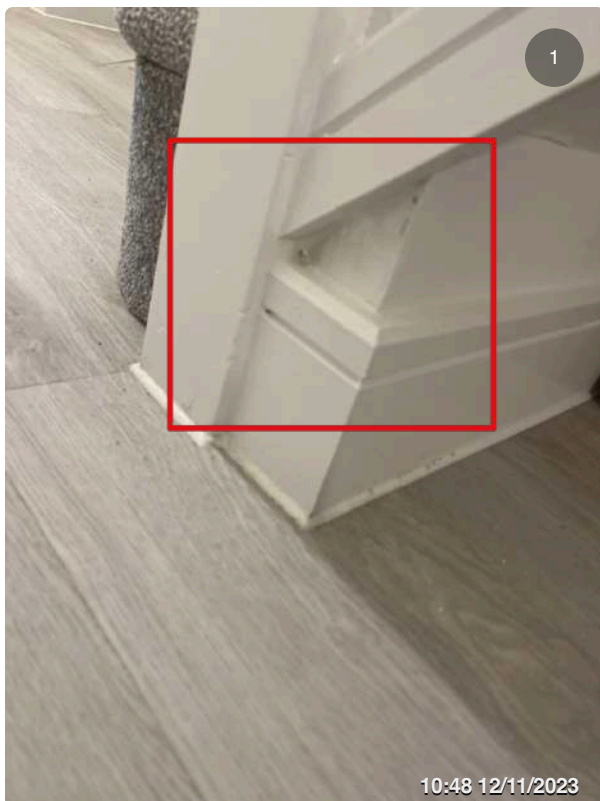
Snag 32

Repatch around socket poor finish



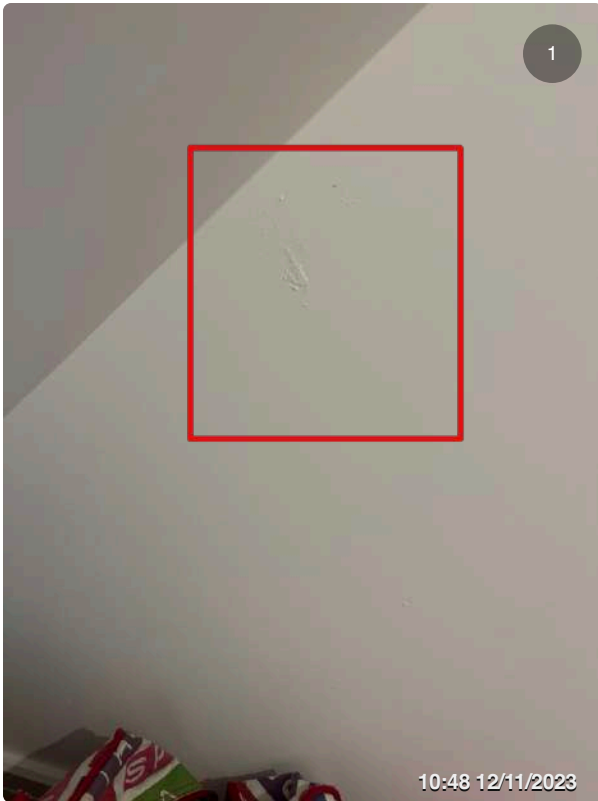
Snag 103

Damage on balustrade side



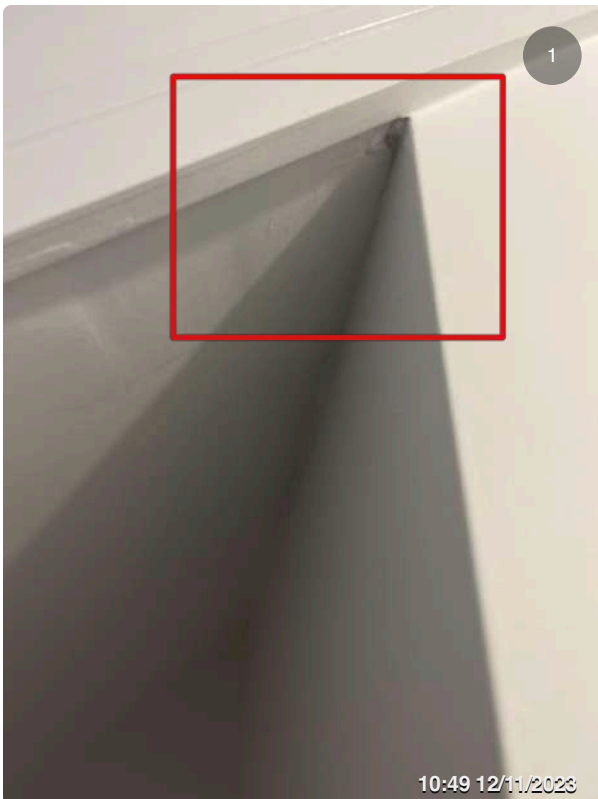
Snag 33

Poor finish at bottom of staircase



Snag 34

Rub down and repaint back of wall under stairs



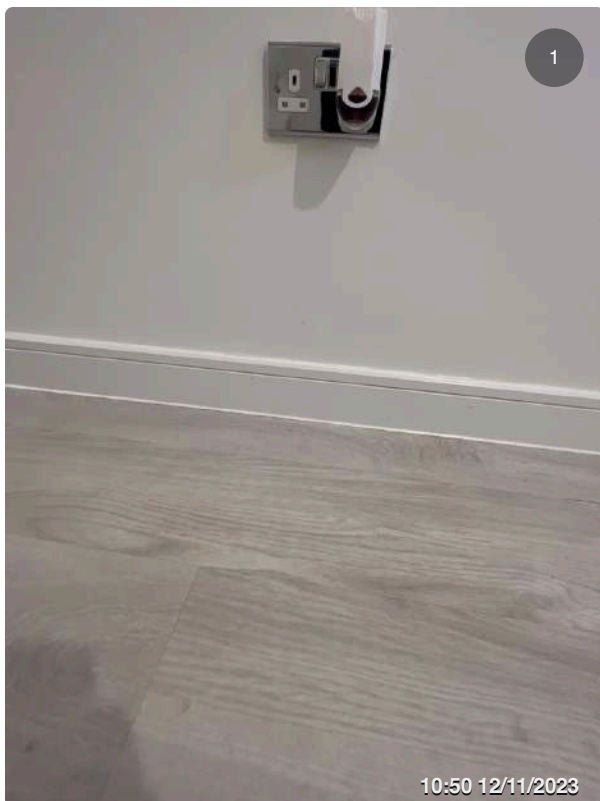
Snag 35

Patch under edge of stair head



Snag 36

Touch up top of all door frame



Snag 37

Touch up skirting inspect all thoroughly stain marks observed



Snag 38

Patch around light switch and decorate



Snag 43

Change pendant to batten lamp holder. Light pendant close to top of door when opening.



Cupboard Snag 39

Tidy cables screw pins needed



Snag 40

Label value



Snag 41

Remove paint stain off fob



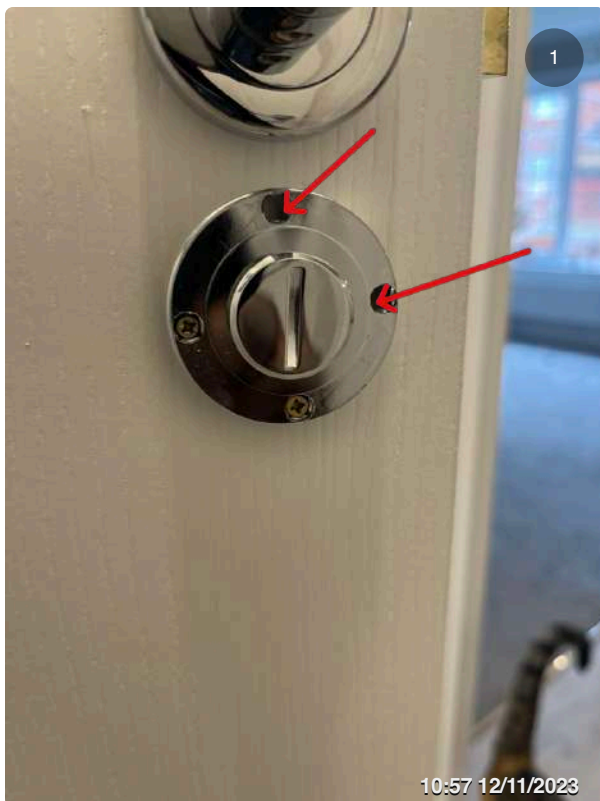
Snag 42

Touch up edge of door handle



WC Snag 44

Touch up edge of door handle



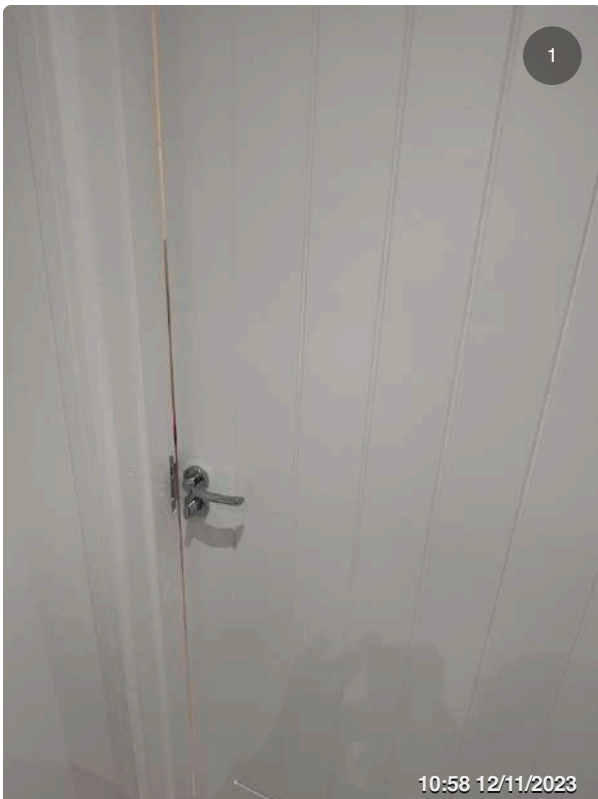
Snag 45

X2 Screws missing off lock internal
& external



Snag 46

Clean paint stains from door handle



Snag 47

Door rattles when closed



Snag 48

Touch up edges of architrave



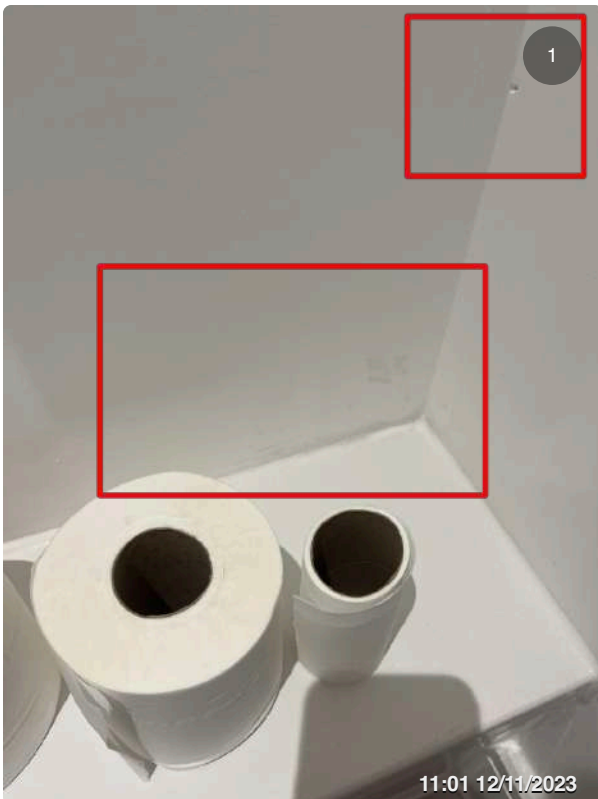
Snag 49

Complete paint works on valves



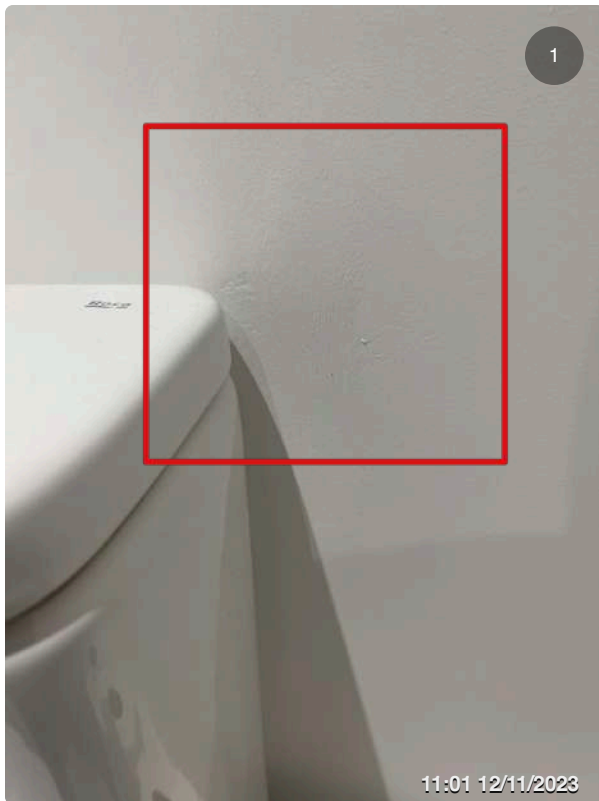
Snag 50

Rough finish of mastic remove and redo. Install a pipe collar at bottom



Snag 51

Repaint section of paint works



Snag 52

Patch side of toilet and touch up



Snag 53

Secure toilet seat as it is loose



Snag 54

Patch back of wall and touch up paint works and add rosette



Snag 55

Skirting missing at back of toilet



Snag 56

Missing vinyl piece



Snag 57

Incomplete patch works around outlet of pipe work to shower rail needs addressing



Snag 58

Patch back of wall to shower rail



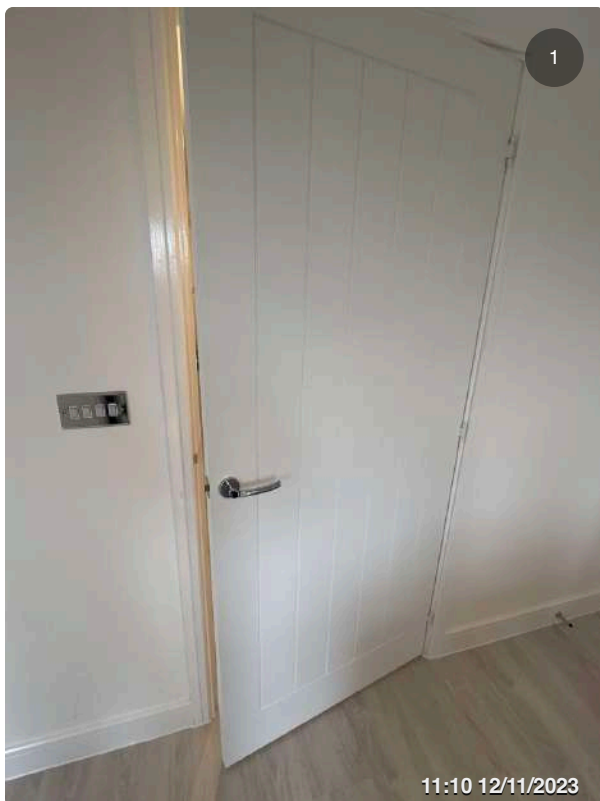
Snag 59

Touch up door frame



Snag 60

Touch up section of wall trowel marks on wall



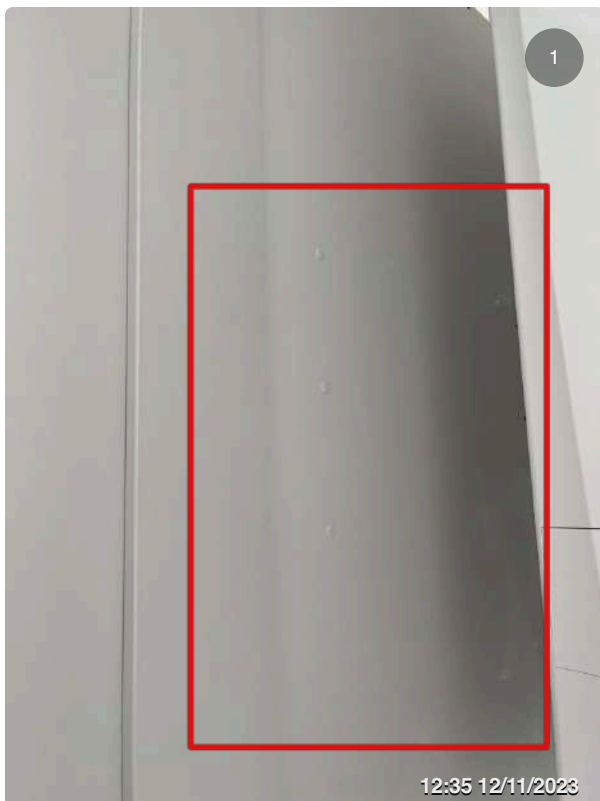
Kitchen/ Cupboard Snag 61

Door rattles when closed needs latching



Snag 161

Gas pipe needs resetting back.
Plumbers to use protection matt at the back on the base unit to solder back of the pipe



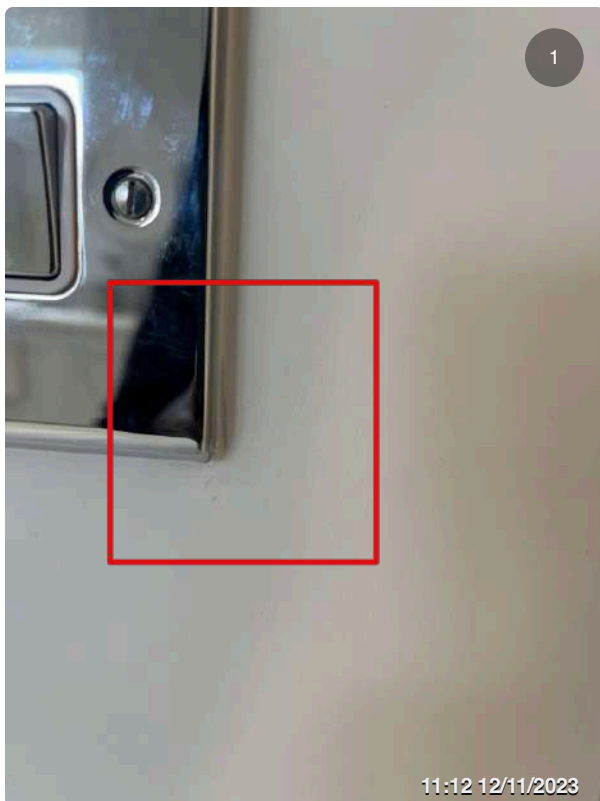
Snag 162

Stains on side of panel



Snag 62

Scratch marks bottom of wall
inspect wall thoroughly



Snag 63

Patch side of light switch



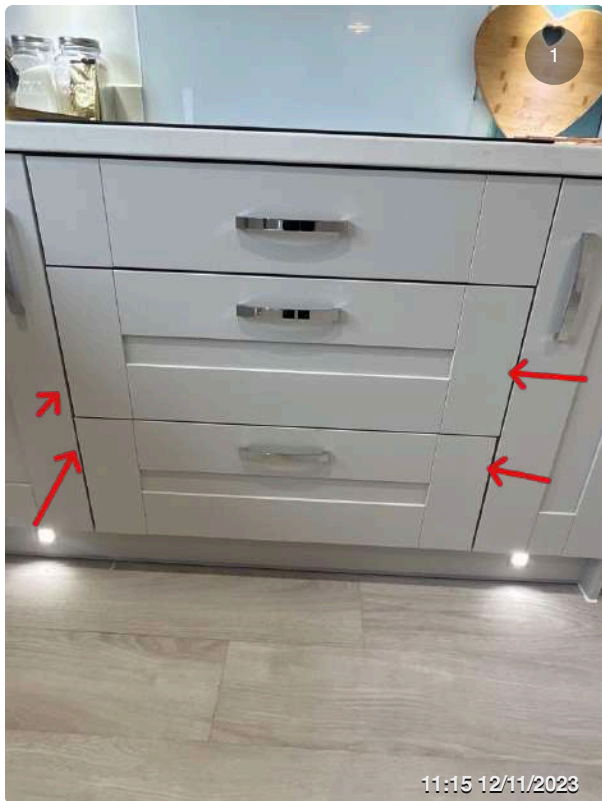
Snag 64

Patch and touch up side of socket



Snag 65

Clean green marks off skirting



Snag 66

Drawers need aligning



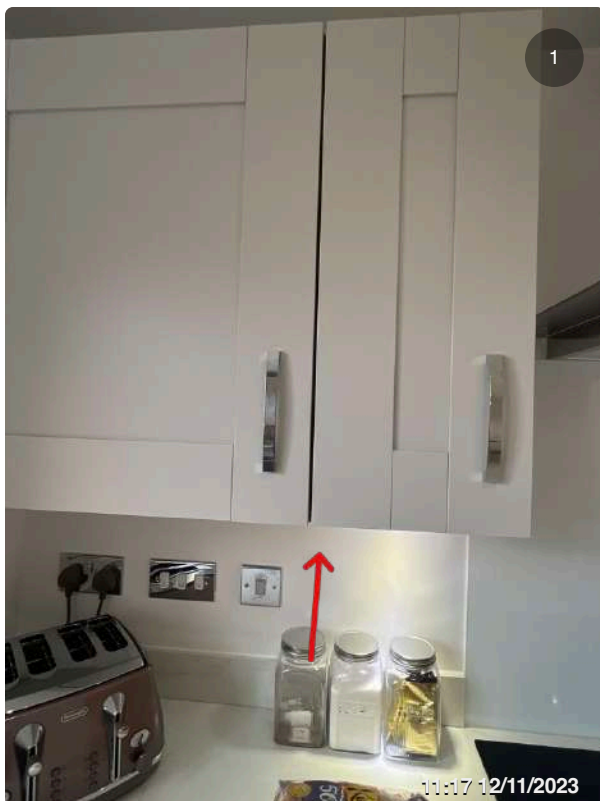
Snag 67

Scratch stain on fan switch



Snag 68

Patch side of cooker hood



Snag 69

Wall unit needs aligning



Snag 70

Damage to top of drawer



Snag 71

Damage to bottom of F/F door.



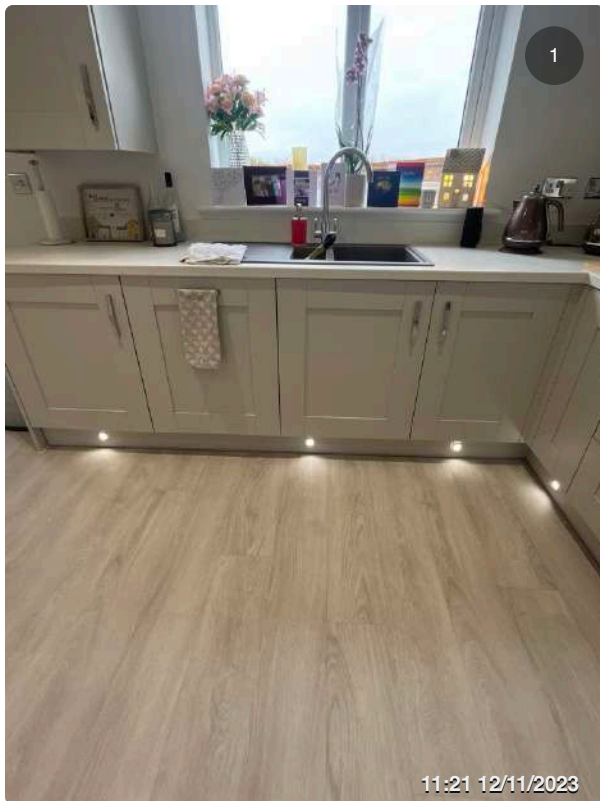
Snag 72

Touch up by f/f

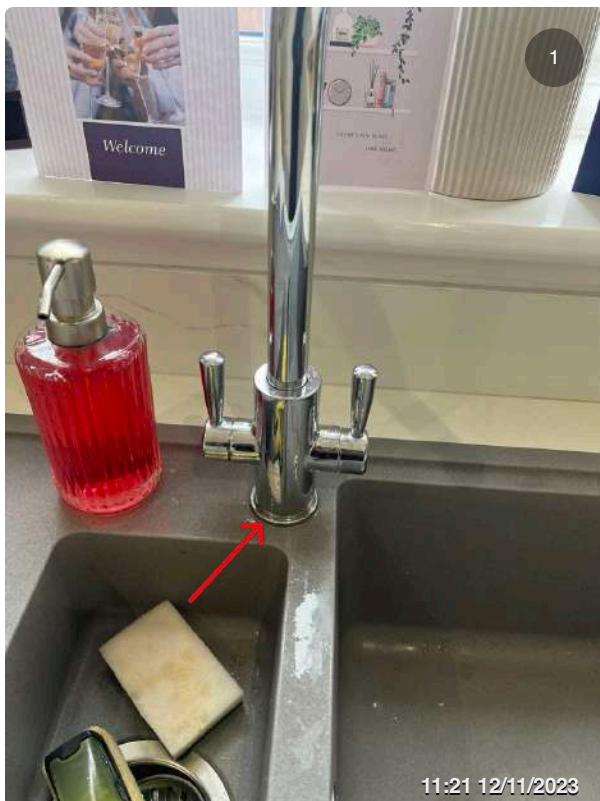


Snag 73

Repaint skirting by F/F



Snag 74
Align doors



Snag 75
Tape loose needs tightening



Snag 76

Patch and touch up top of reveals



Snag 77

Patch wall by blowout pipe



Snag 78

Covers missing on brackets x2
inside boiler unit



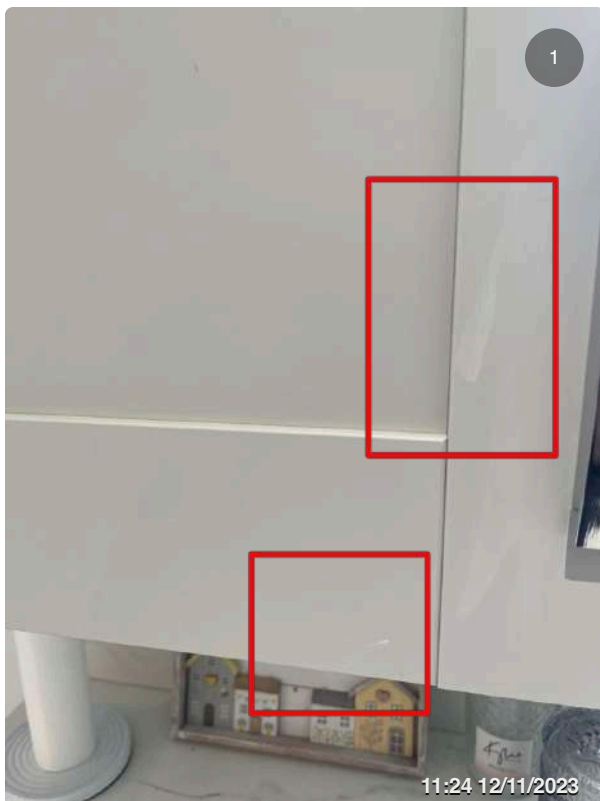
Snag 79

Screw missing on bracket



Snag 80

Patch around bracket and make good back wall poor finish



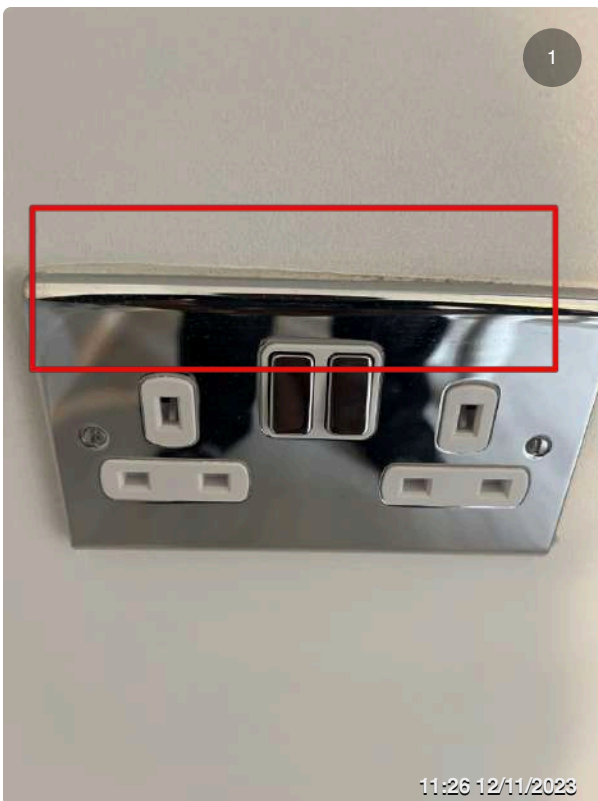
Snag 81

Scuff marks on boiler door



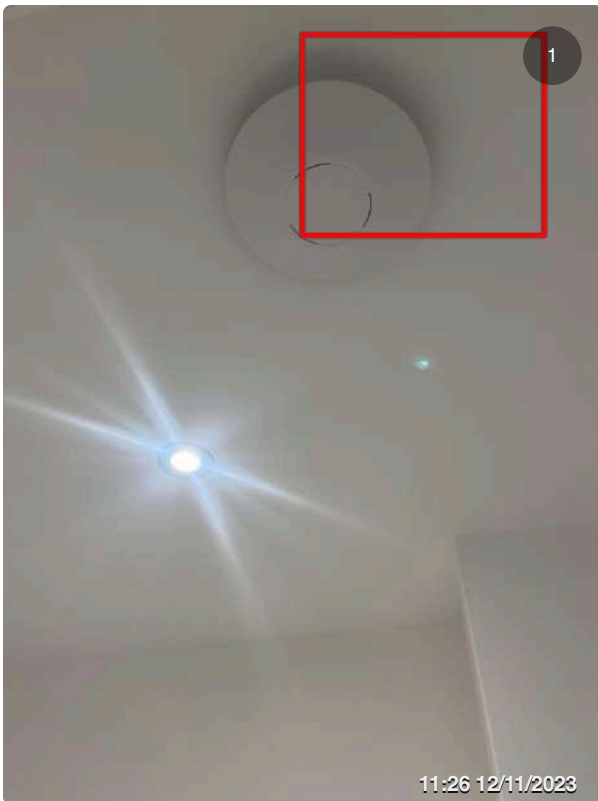
Snag 82

Gap on internal frame door panel
needs polishing by hometec /
magicman



Snag 83

Touch up top of socket



Snag 84

Fan in cupboard appears not to be blowing as much as kitchen fan



Snag 85

Door rattles needs securing on latch



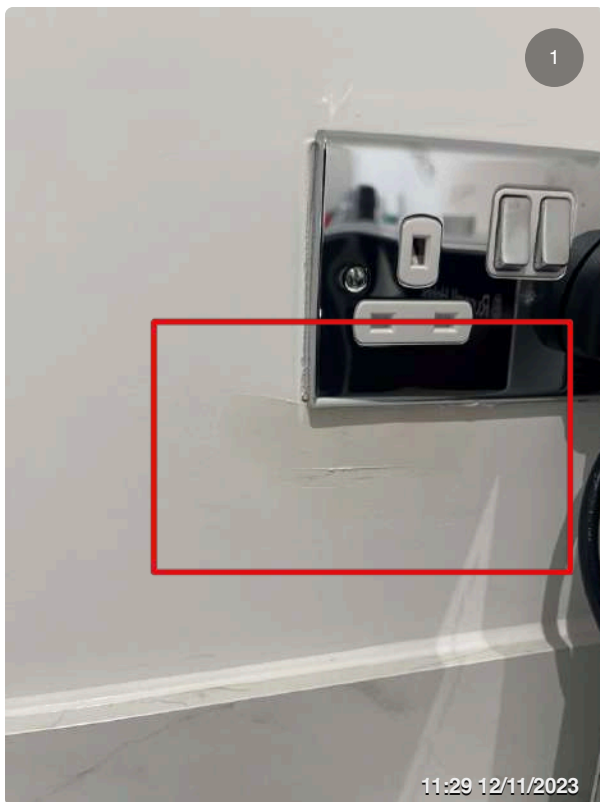
Snag 86
Chip on door



Snag 87
Doors need aligning

Snag 88

Covers missing on hinges



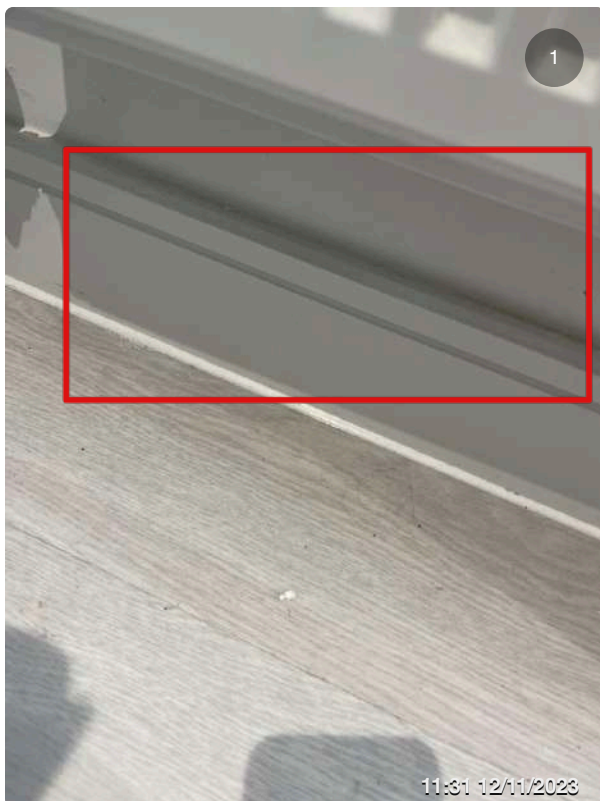
Snag 89

Incomplete patch work around socket. Touch up when finished



Snag 90

Touch up pencil marks back of wall
inspect thoroughly



Snag 91

Touch up bottom of radiator



Snag 92

Floor stop missing. Handle hits into oven



Snag 93

Touch up edge of kitchen door



Lounge Snag 94

Door rattles when closed



Snag 95

Scratch on back of wall. Inspect wall thoroughly



Snag 96

Touch up and patch side of windowsill



Snag 97

Touch up underside of windowsill



Snag 98

Clips missing on pipes



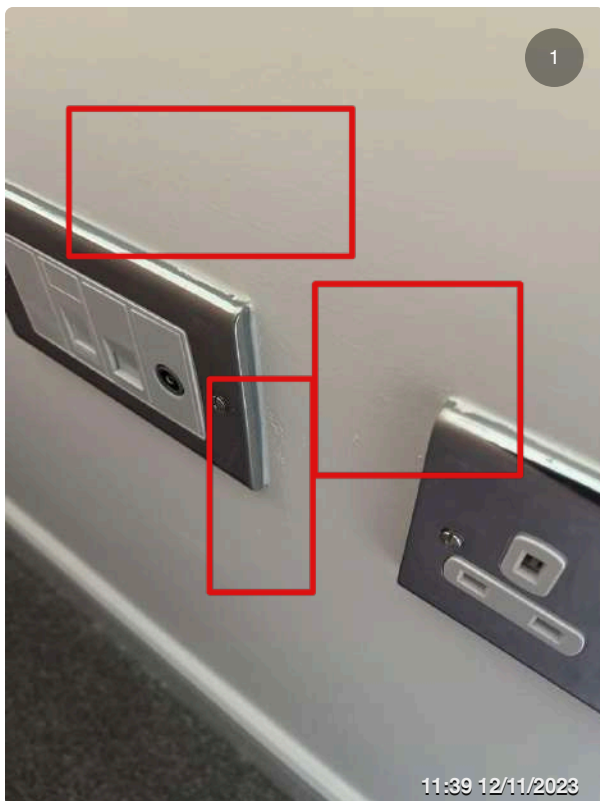
Snag 99

Scuff marks on frame inspect thoroughly



Snag 100

Patch bottom edge of reveals

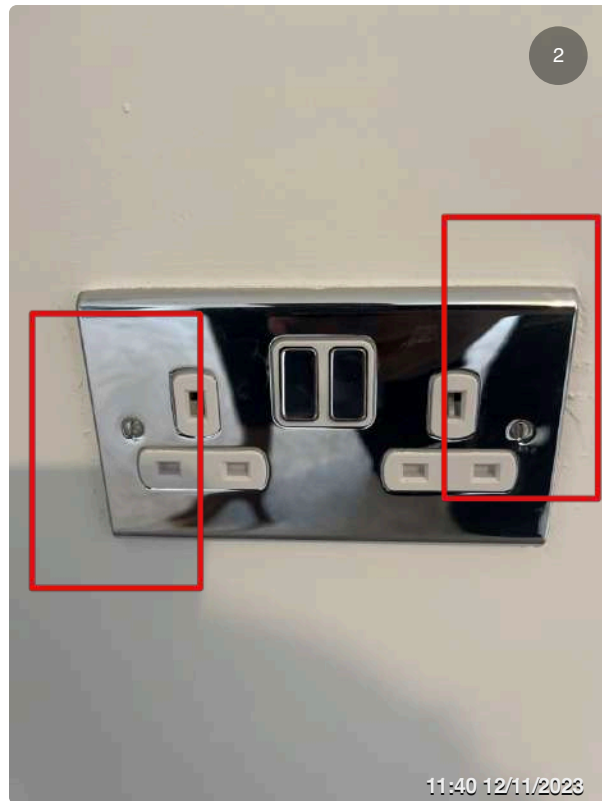
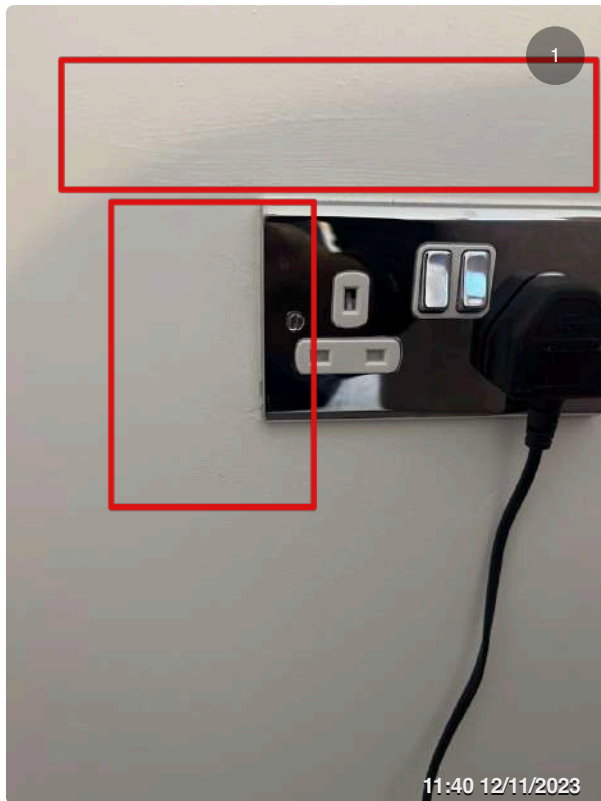


Snag 101

Patch around telecom socket

Snag 102

Patch edge of sockets x3 review all thoroughly



Stairs Snag 104

Patch out and touch up post



Snag 105

Touch up edge of stair string



Snag 106

Scuff marks on side wall



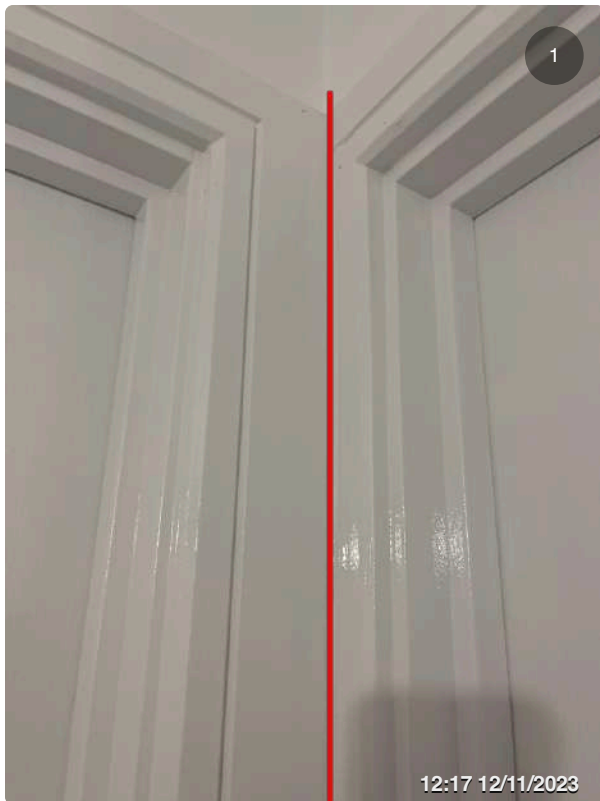
Snag 107

Nail pop needs patching and made good due prouting



Landing Snag 108

Touch up around loft



Snag 151

Poor jointing on carpentry walls for two bedrooms



Snag 144

Scratch mark back of wall



Snag 109

Radiator loose needs securing



Snag 110

Touch up bottom of radiator



Snag 111

Touch up handrail



Bedroom 1 By Front Elevation Snag 112

Door handle stiff needs addressing

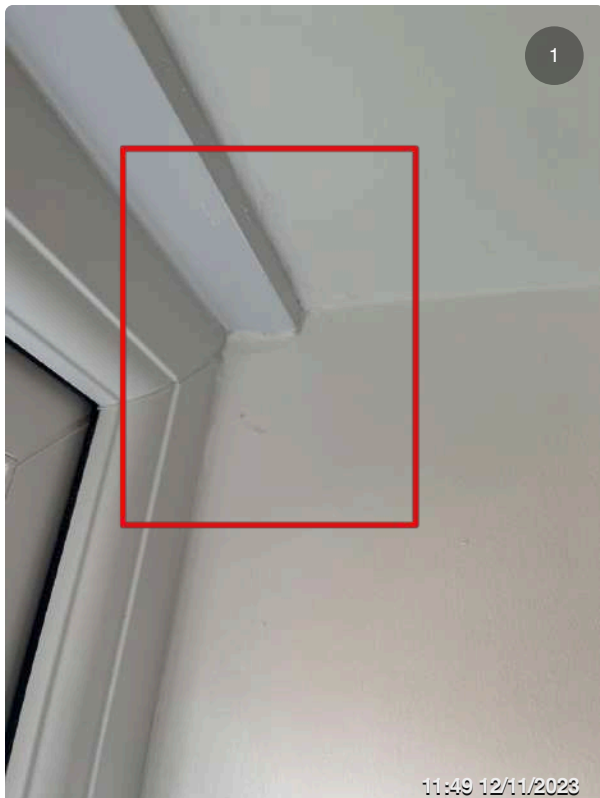


Snag 113

Stain marks on window needs removing

Snag 114

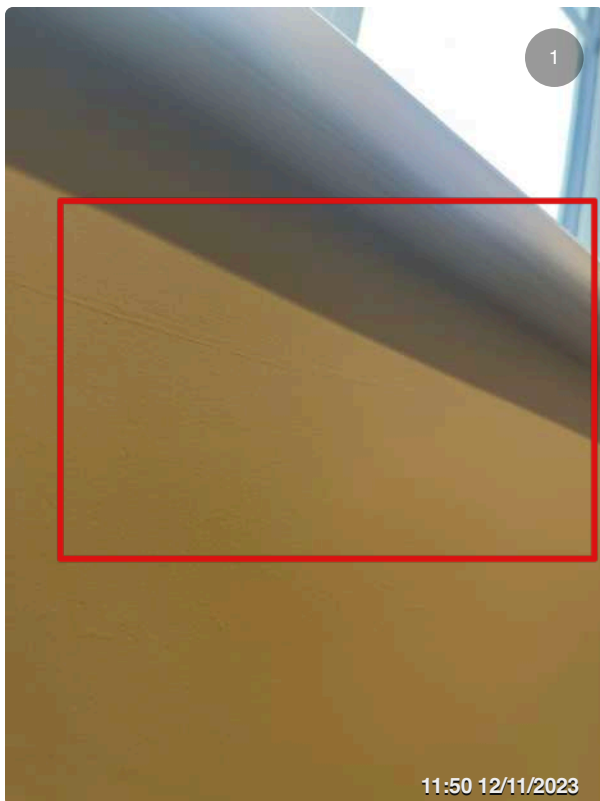
Patch out top of reveal





Snag 115

Rough finish on windowsill



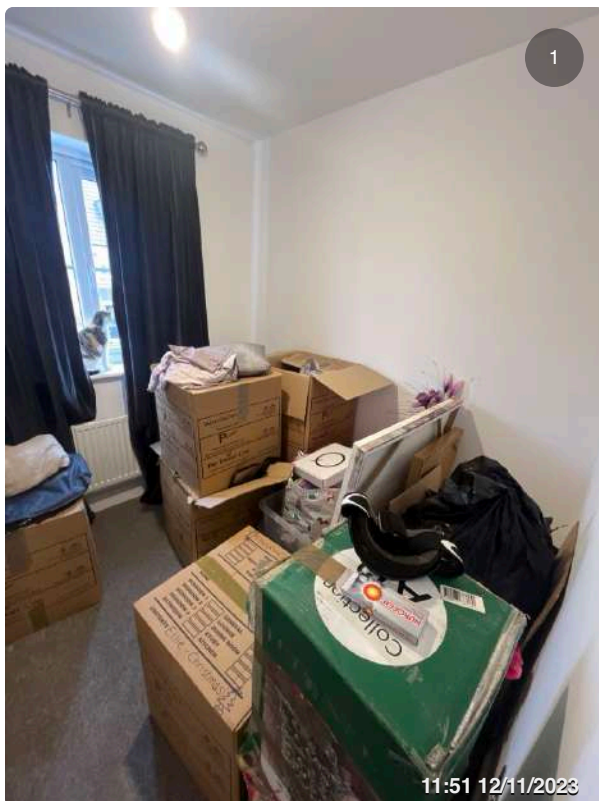
Snag 116

Touch up underside of windowsill



Snag 117

Touch up side of sockets



Snag 118

Inspect all walls thoroughly check for dents, scratches, paint stains.
Unable to review due to material

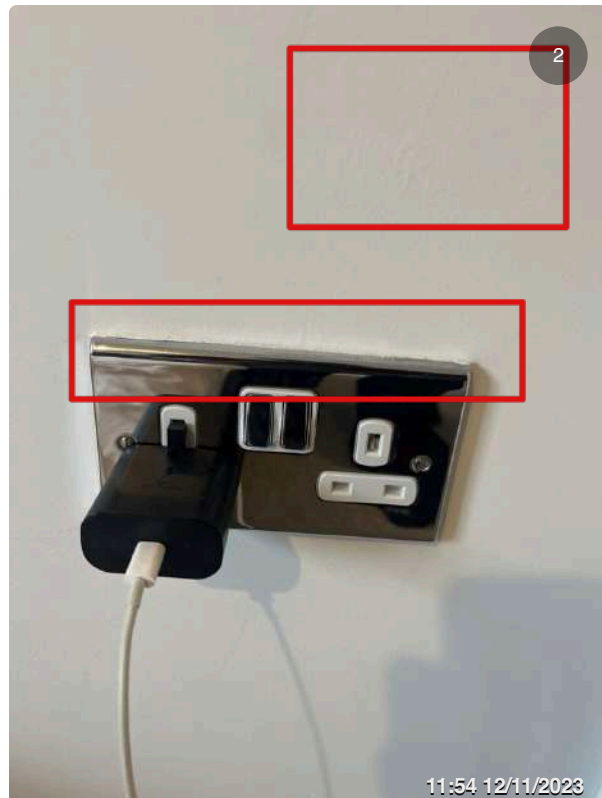


Bedroom En-suite Snag 119

Door rattles when closed

Snag 120

Patch and redecorate around socket and switch





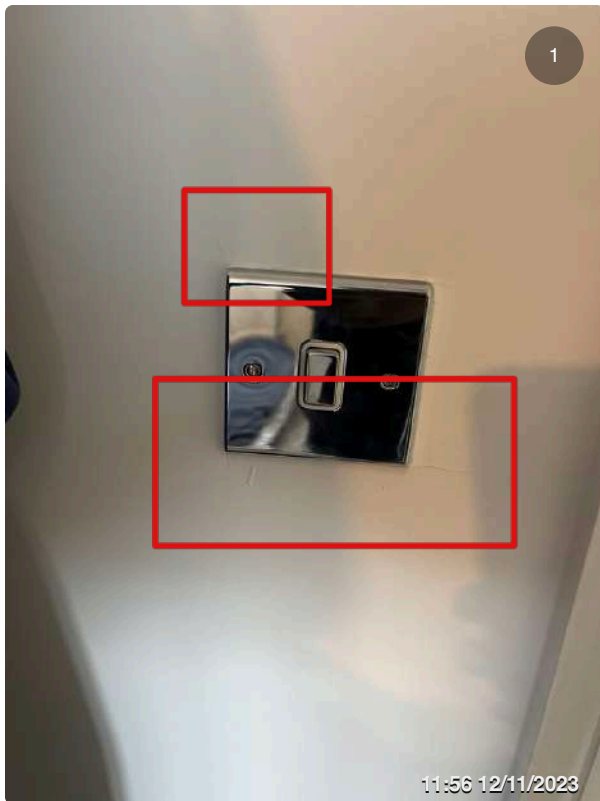
Snag 121

Scuff marks on window frame
needs polishing out by magic man
or hometec



Snag 122

Repatch top of reveal



Snag 123

Rub down paint stains on wall by switch



Snag 124

Scuff marks on door handle



Snag 125

Screws missing on lock



Snag 126

Socket not square



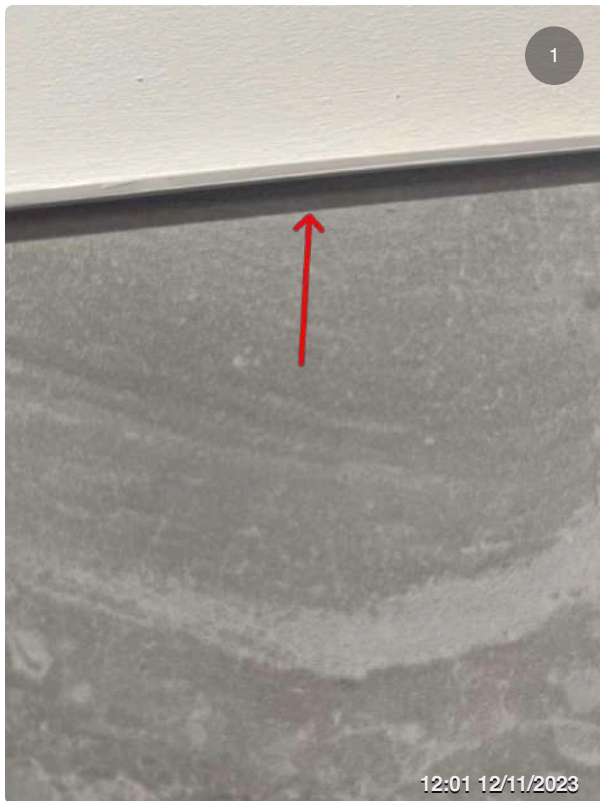
Snag 127

Touch up paint work of pipe outlet



Snag 128

Tap loose needs securing



Snag 129

Lip on underside of beam, tiles not flush



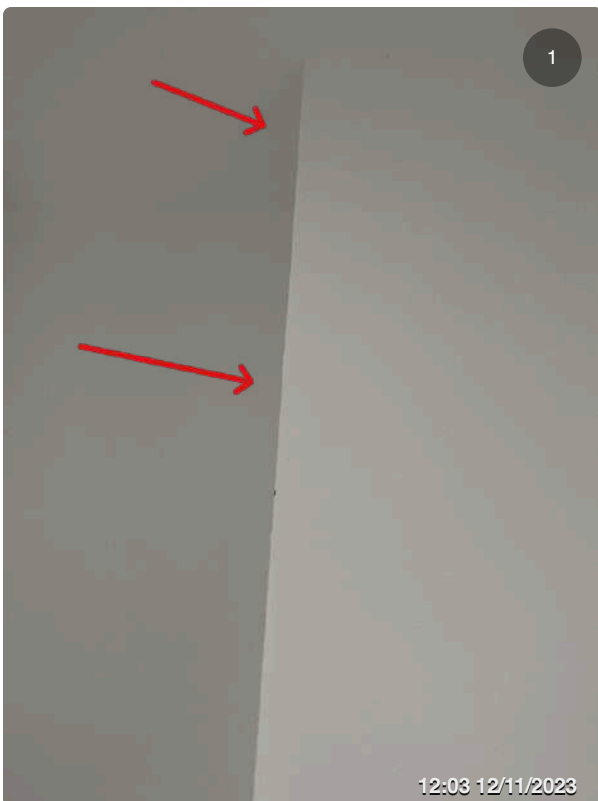
Snag 130

Poor mastic finish at top of tiles needs redoing better and tidier.



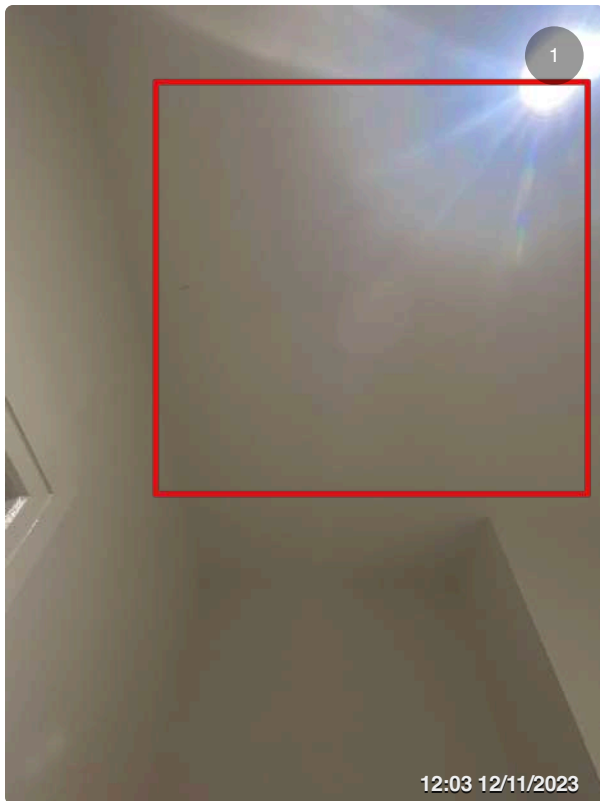
Snag 131

Touch up top of ceiling



Snag 132

Wall edges not straight and out of square needs patching out



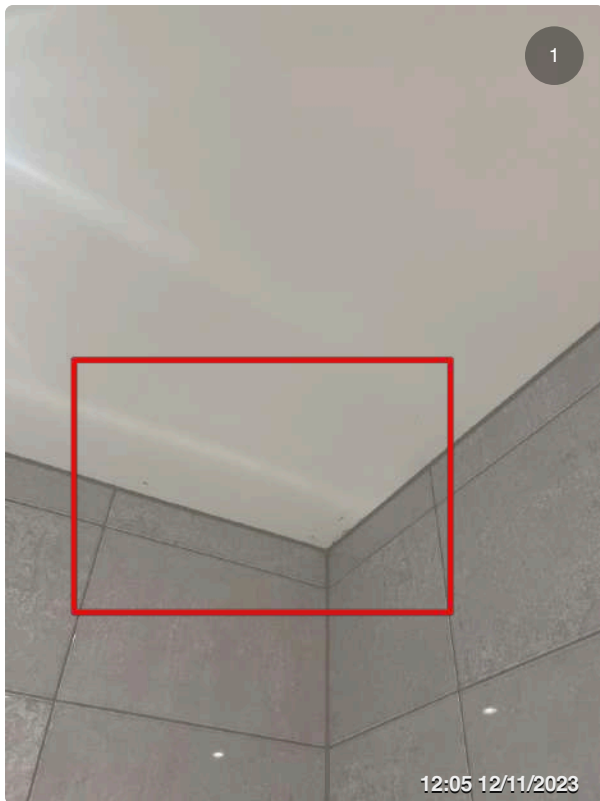
Snag 133

Section of ceiling needs touching up



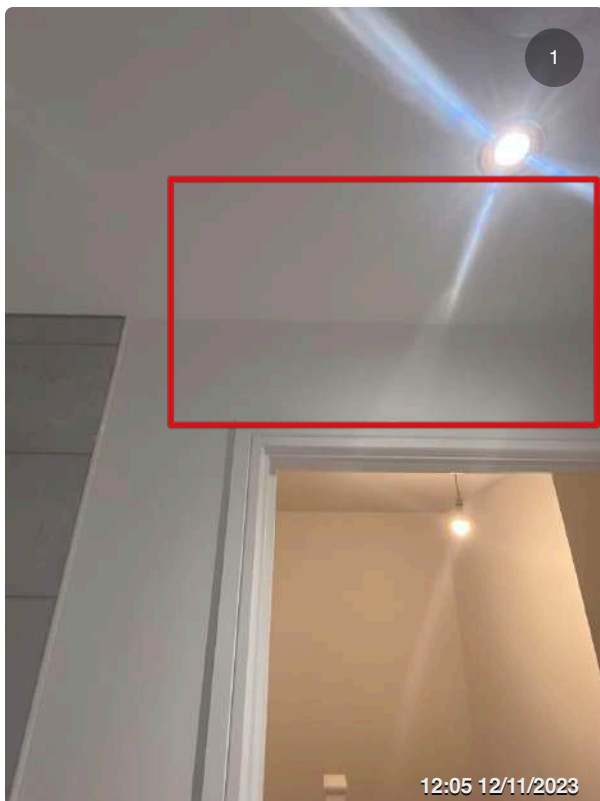
Snag 134

Poor finish back of toilet. Pipe needs painting and poor mastic finish. Fix collar if able



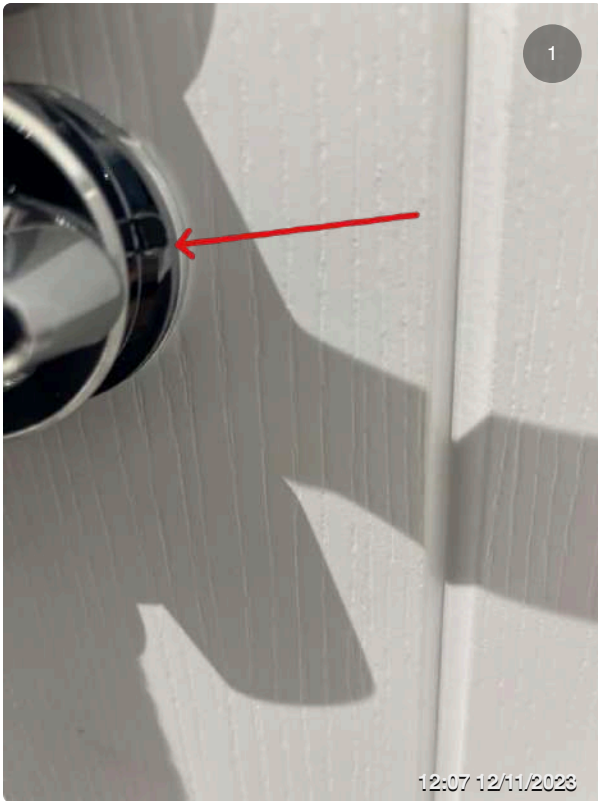
Bathroom Snag 135

Touch up top of ceiling throughout



Snag 136

Touch up back wall throughout



Snag 137

Screw missing on lock x2



Snag 138

Bath panel bowing and big gap on edge needs replacing



Snag 139

Tap loose needs securing tightly

Snag 140

Poor finish on edges of mastic lips observed inspect all thoroughly





Snag 141

Mastic bottom to avoid water penetration coming through

Snag 142

Damage ceiling around light sockets that needs patching and addressing





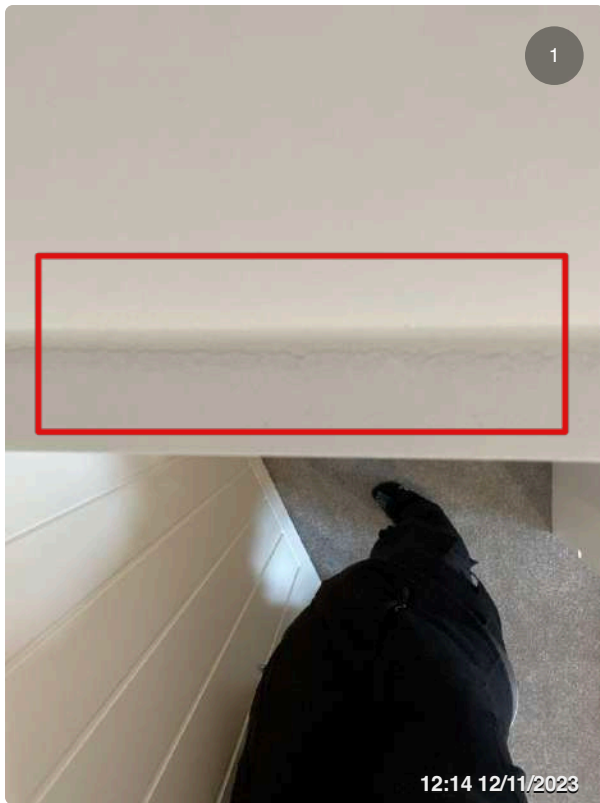
Snag 143

Door rattles when closed



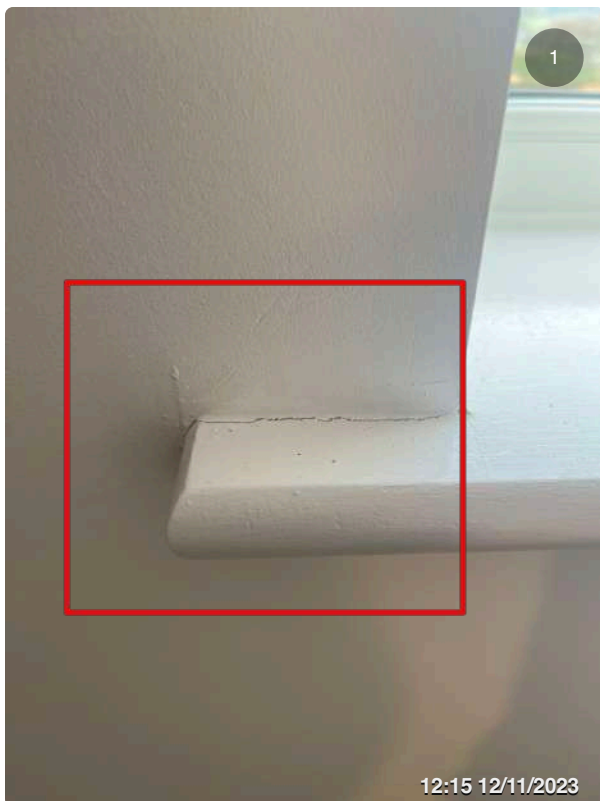
Bedroom 3 Rear Snag 145

Patch around light switch



Snag 146

Touch up top of door



Snag 147

Patch around windowsil edges



Snag 148

Patch up under windowsill



Snag 149

Patch bottom edge of reveal



Snag 150

Window handle stiff when closing and opening



Bedroom 4 Snag 152

Patch around socket to wall



Snag 153

Touch up edges of wall



Snag 154

Touch up edge of wall



Snag 155

Flashing on side of light pendant



Snag 156

Touch up bottom of windowsill



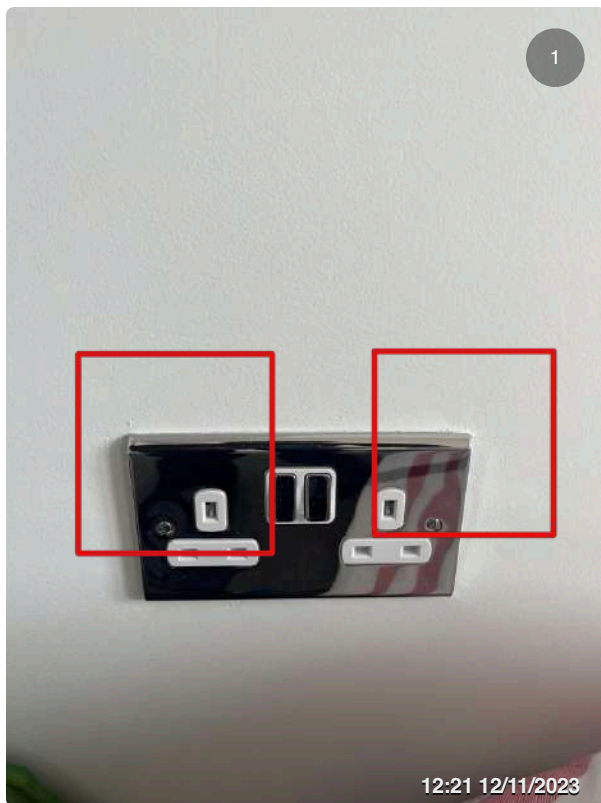
Snag 157

Touch up side of radiator



Snag 158

Touch up edges of reveal



Snag 159

Touch up around sockets x2



Loft Snag 160

Tidy cables



Back Elevation Snag 164

Stain mark on threshold



Snag 165

Point up edge of reveal



Snag 166

Facia bowing needs addressing



Snag 167

Clip missing on electric cable



Snag 167

Touch up brickwork bottom of garage



Snag 168

Scrap wall and rejet wash



Snag 169

Clip covers missing



Snag 170

Remove nail on fencing



Snag 171

Nails prouting out



Snag 172

Brick acid top of retaining wall and
jetwash



Snag 173

Scarp snots of brickwork



Snag 174

Clean muck out of holes throughout wall



Snag 175

Jet wash and brick clean retaining wall



Snag 176

Chisel out mortar joint. Please redo with mastic better durability long term



Snag 177

Jetwash wall and clean stain



Snag 178

Poor mastic finish on edge of window redo



Snag 179

MAJOR - cap end missing off blowout pipe



Snag 180

Clean off stains from slab



Snag 181

Infil gap with seeds



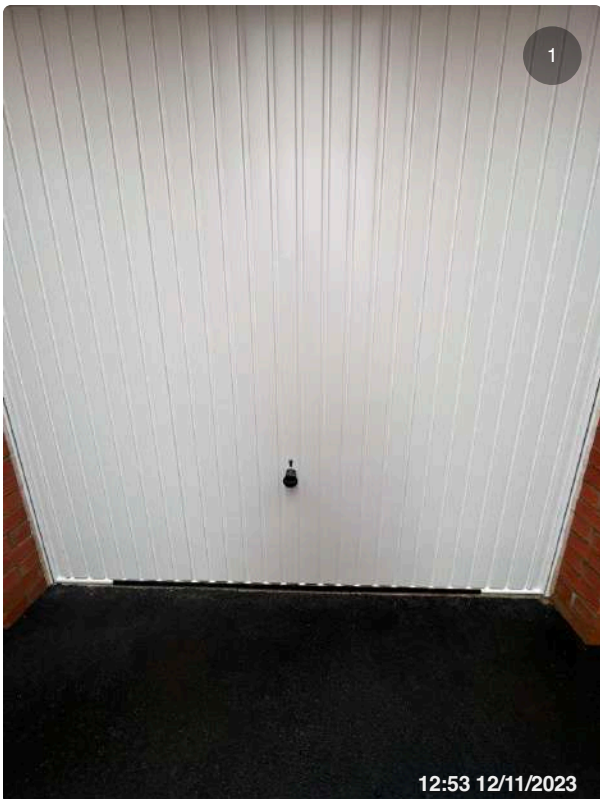
Garage Snag 182

Unable to review walls adequately due to material



Snag 183

Repoint edge of reveals



Snag 184

Clean stain marks off garage door



Snag 185

Bitumen inspection lid